
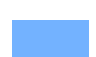



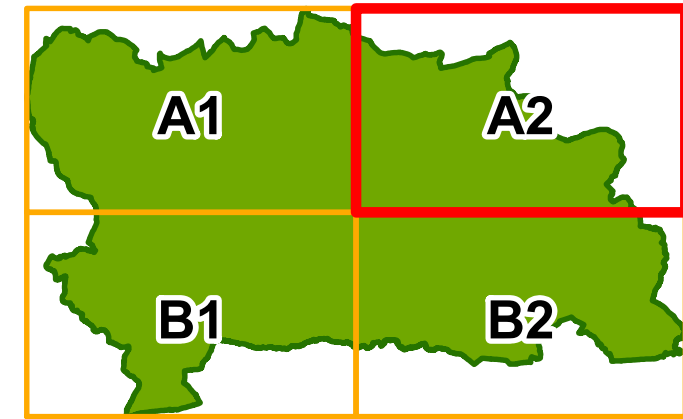
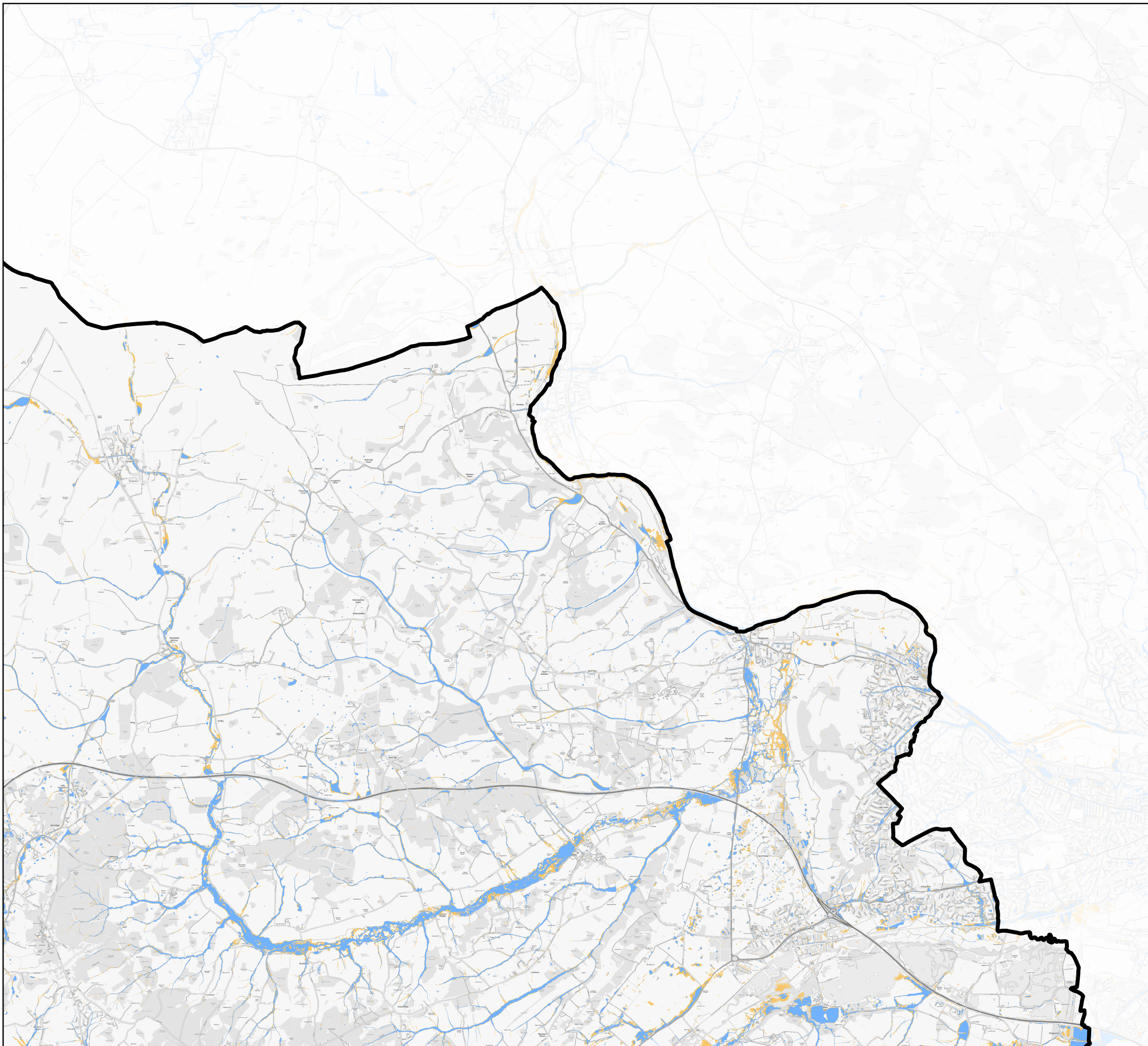
Contains Ordnance Survey data © Crown copyright and database right 2022.
 Contains public sector information licensed under the Open Government Licence v3.0.

This map represents the impact of climate change on the Risk of Flooding from Surface Water at a 1 in 100-year event with 40% allowances for climate change, in line with current Environment Agency guidance.

Legend

-  West Berkshire Boundary
-  Surface Water Flood Risk - 1 in 100-year extent (Present Day)
-  Surface Water Flood Risk - 1 in 100-year + 40% climate change extent (2070s upper end allowance)


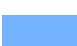

Strategic Flood Risk Assessment - Level 1
 Appendix P - Risk of Flooding from Surface Water -
 1 in 100-year 2070s upper end (40%)
 climate change scenario



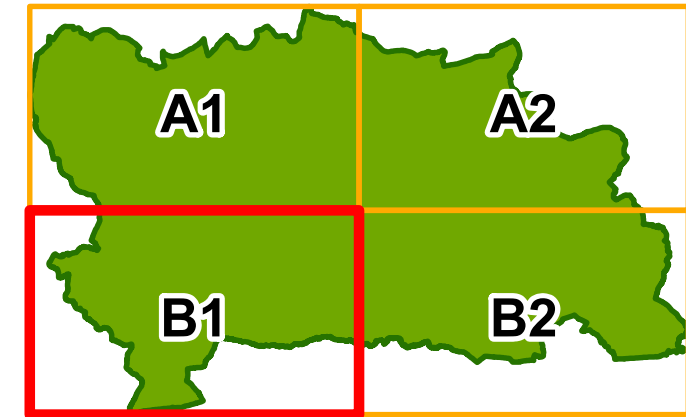
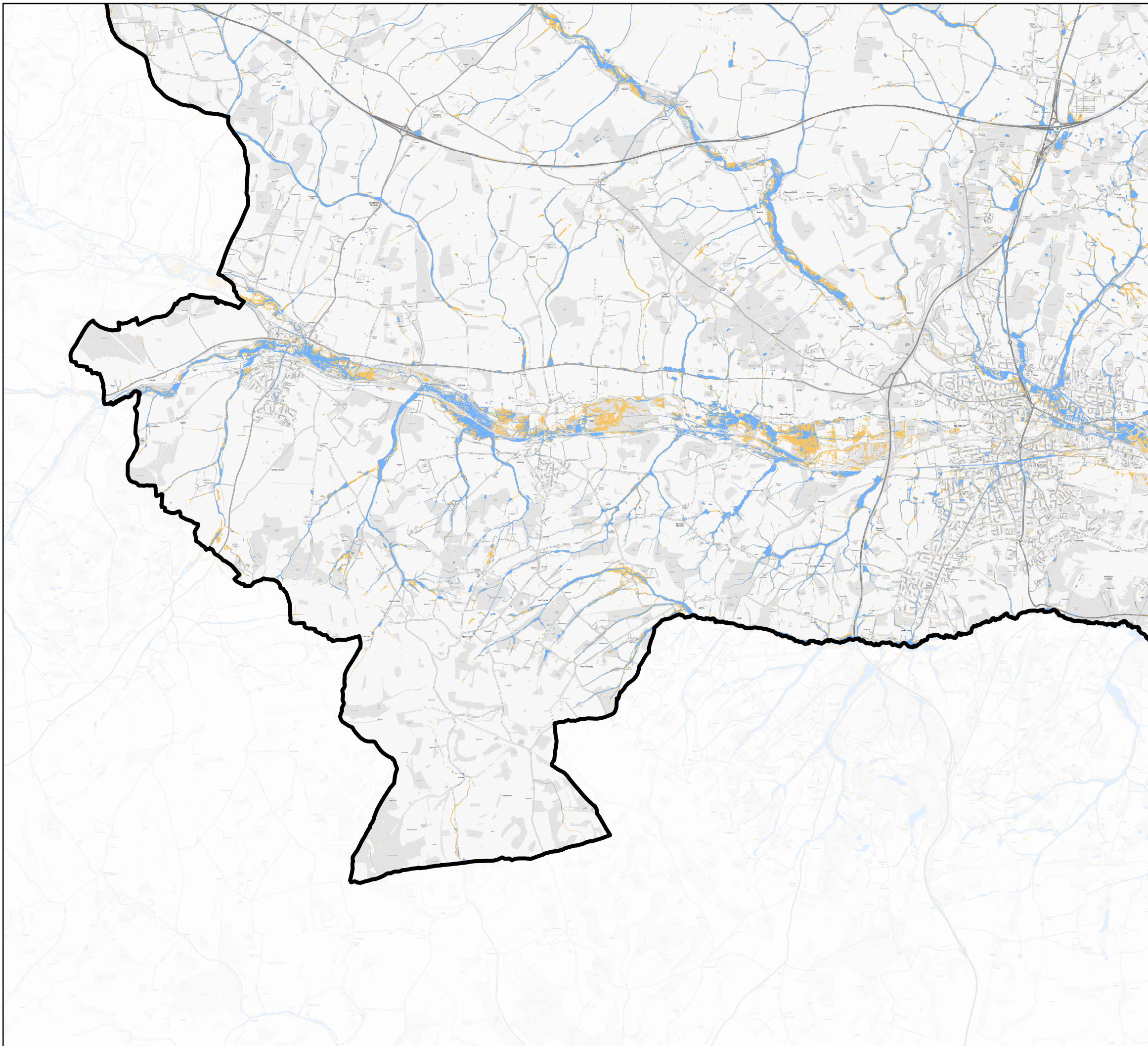
Contains Ordnance Survey data © Crown copyright and database right 2022.
 Contains public sector information licensed under the Open Government Licence v3.0.

This map represents the impact of climate change on the Risk of Flooding from Surface Water at a 1 in 100-year event with 40% allowances for climate change, in line with current Environment Agency guidance.

Legend

-  West Berkshire Boundary
-  Surface Water Flood Risk - 1 in 100-year extent (Present Day)
-  Surface Water Flood Risk - 1 in 100-year + 40% climate change extent (2070s upper end allowance)


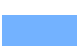

Strategic Flood Risk Assessment - Level 1
 Appendix P - Risk of Flooding from Surface Water -
 1 in 100-year 2070s upper end (40%)
 climate change scenario



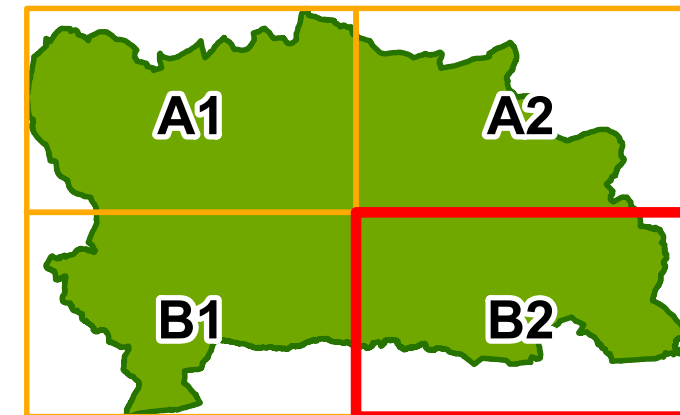
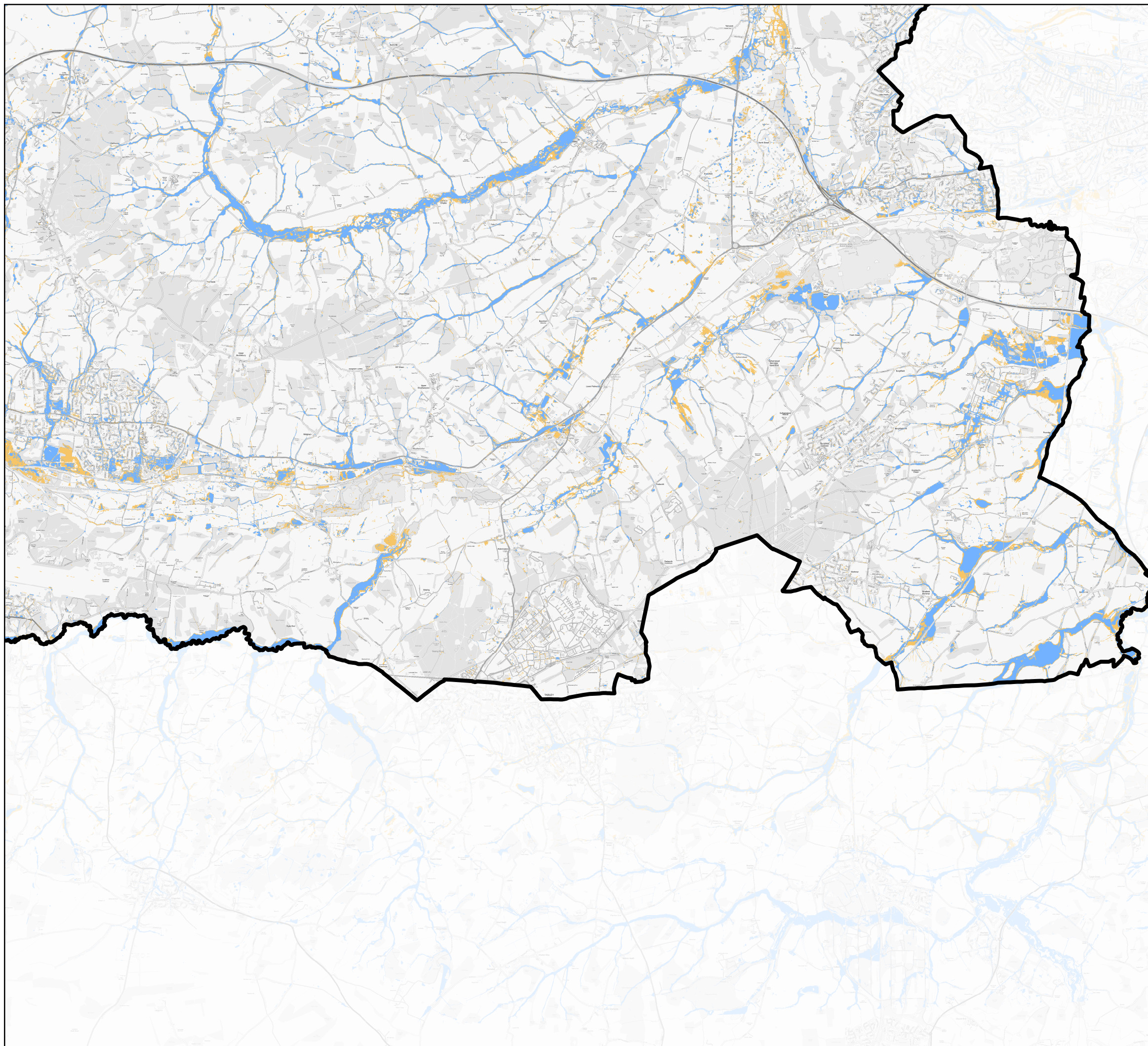
Contains Ordnance Survey data © Crown copyright and database right 2022.
 Contains public sector information licensed under the Open Government Licence v3.0.

This map represents the impact of climate change on the Risk of Flooding from Surface Water at a 1 in 100-year event with 40% allowances for climate change, in line with current Environment Agency guidance.

Legend

-  West Berkshire Boundary
-  Surface Water Flood Risk - 1 in 100-year extent (Present Day)
-  Surface Water Flood Risk - 1 in 100-year + 40% climate change extent (2070s upper end allowance)


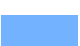

Strategic Flood Risk Assessment - Level 1
 Appendix P - Risk of Flooding from Surface Water -
 1 in 100-year 2070s upper end (40%) climate change scenario



Contains Ordnance Survey data © Crown copyright and database right 2022.
 Contains public sector information licensed under the Open Government Licence v3.0.

This map represents the impact of climate change on the Risk of Flooding from Surface Water at a 1 in 100-year event with 40% allowances for climate change, in line with current Environment Agency guidance.

Legend

-  West Berkshire Boundary
-  Surface Water Flood Risk - 1 in 100-year extent (Present Day)
-  Surface Water Flood Risk - 1 in 100-year + 40% climate change extent (2070s upper end allowance)

Strategic Flood Risk Assessment - Level 1
 Appendix P - Risk of Flooding
 from Surface Water -
 1 in 100-year 2070s upper end (40%)
 climate change scenario