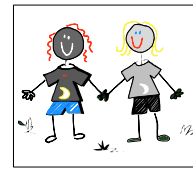


Information and advice from:



**Early Development and
Inclusion Team**

Supporting Inclusion at the
Early Years Foundation Stage



Follow your child's lead

- **Children learn best through play.** When you follow your child's lead during play you are helping to:
 - keep the play at their pace, encouraging them to take charge.
 - show your child that you are interested in what they like.
 - develop their play skills, imagination, problem solving and self-confidence.
 - develop important communication skills such as, joint attention and turn taking.
- **Try OWLing:**
 - **Observe** – watch your child play; look at what they do with the toys; it may not be what you expect.
 - **Wait** – don't be in a hurry to do things for your child, give them time to work it out, you may be surprised at what they can do; wait until they seek help.
 - **Listen** – accept your child's ideas and go with the flow; join in with their ideas and play, copy what they do.
- **Getting started:**
 - Look and see what your child is showing you (e.g. banging objects, stacking bricks). Get down to their level and imitate their actions.
 - Try doing it at the same time as them, at first.
 - Then pause and do it in response to their actions, e.g. they bang a brick on the floor – they stop – you bang a brick on the floor for about the same amount of time – you stop. Wait for a response.
 - If your child moves on to something new: follow, observe, wait, listen and repeat.

