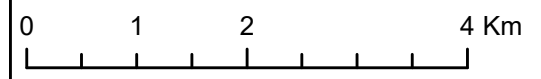
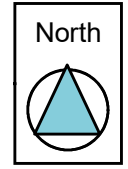
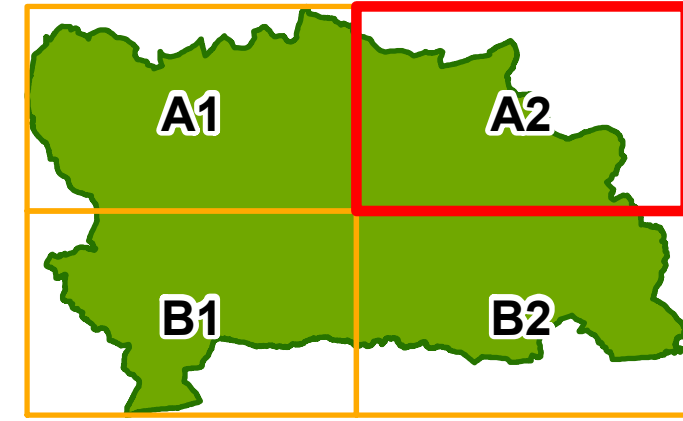
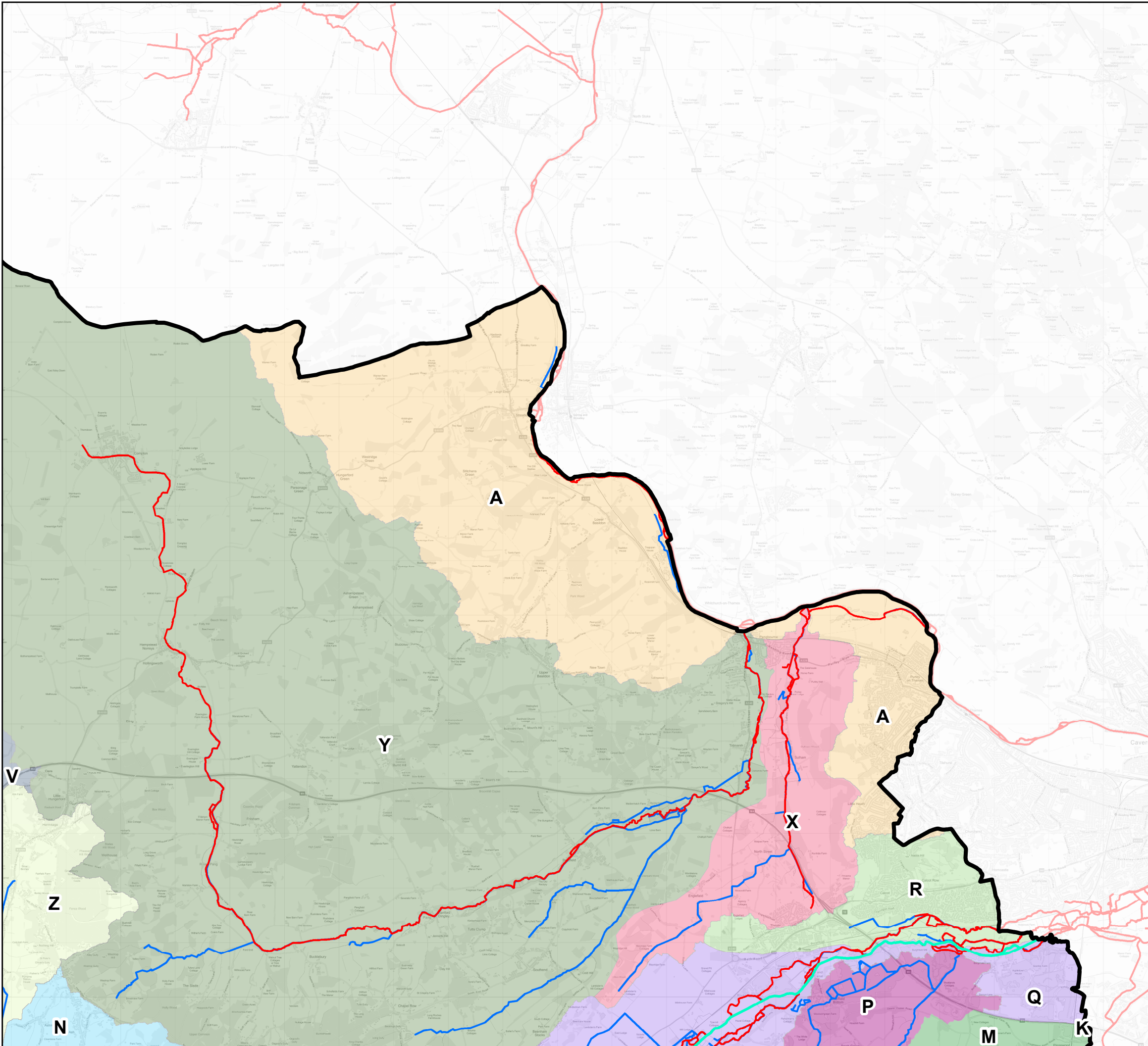


Contains Ordnance Survey data © Crown copyright and database right 2017.
 Contains public sector information licensed under the Open Government Licence v3.0.

Legend

- West Berkshire Boundary
- Main Rivers
- Ordinary Watercourses
- Main River Catchment Areas**
- AC - Mill Brook and Bradfords Brook system, Wallingford
- AD - Ginge Brook and Mill Brook
- L - Kennet and Avon Canal and Dun above Hungerford
- N - Kennet (Lambourn confluence to Enborne confluence)
- O - Froxfield Stream
- S - Middle Kennet (Marlborough to Hungerford)
- T - Middle Kennet (Hungerford to Newbury)
- U - Aldbourne
- V - Winterbourne
- Y - Pang
- Z - Lambourn (Source to Newbury)

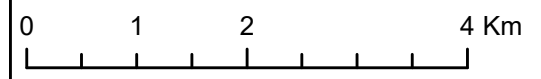
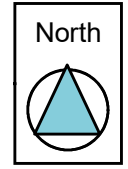
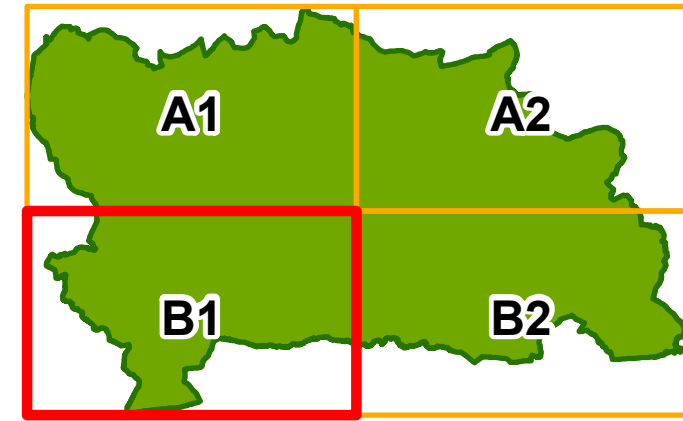
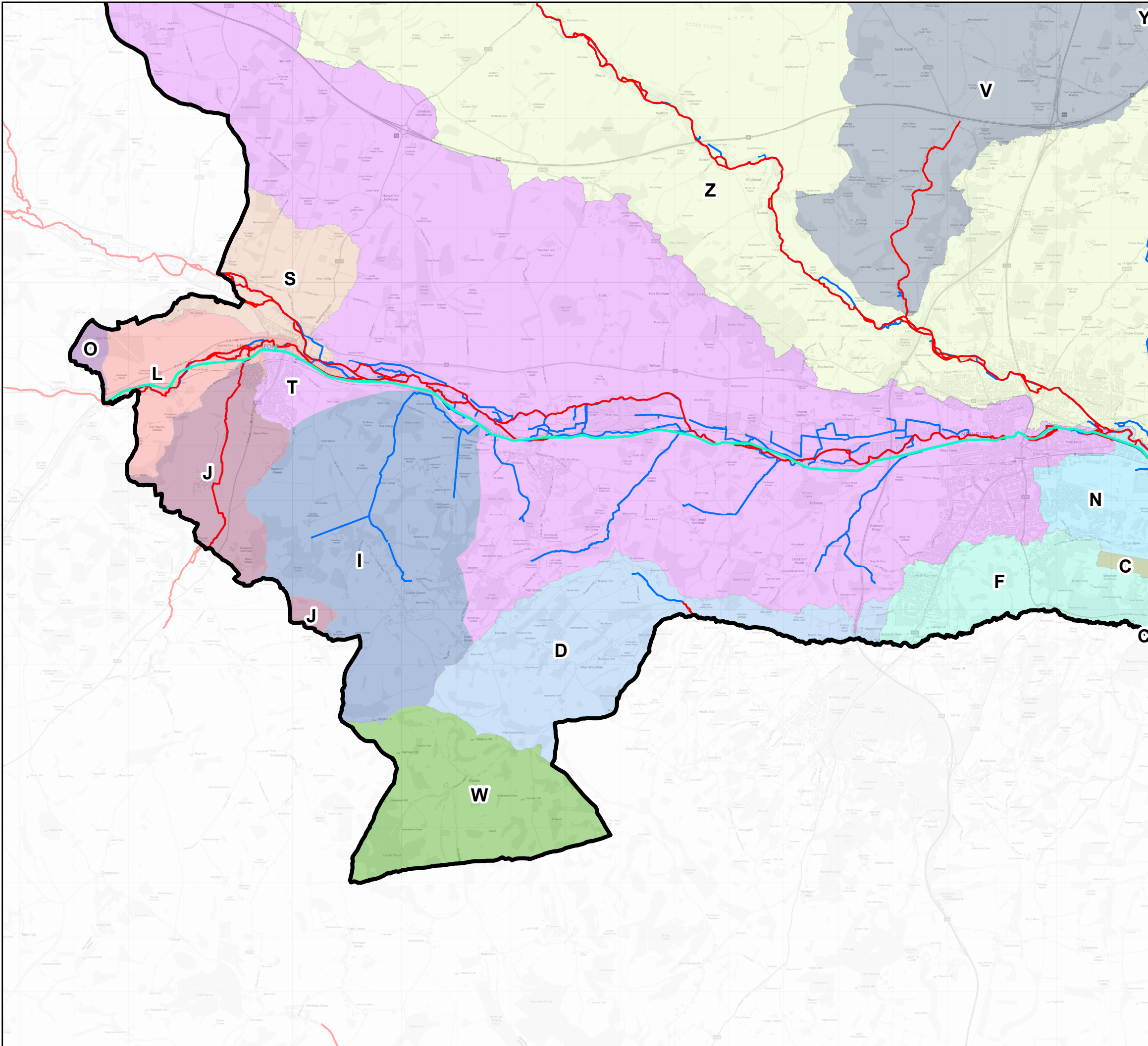
Strategic Flood Risk Assessment - Level 1
 Appendix D - Watercourse Catchments



Contains Ordnance Survey data © Crown copyright and database right 2017.
 Contains public sector information licensed under the Open Government Licence v3.0.

- Legend**
- West Berkshire Boundary
 - Kennet and Avon Canal
 - Main Rivers
 - Ordinary Watercourses
- Main River Catchment Areas**
- A - Thames Wallingford to Caversham
 - K - Foudry Brook (West End Brook to M4)
 - M - Burghfield Brook
 - N - Kennet (Lambourn confluence to Enborne confluence)
 - P - Clayhill Brook
 - Q - Kennet and Holy Brook
 - R - Holy Brook
 - V - Winterbourne
 - X - Sulham Brook
 - Y - Pang
 - Z - Lambourn (Source to Newbury)

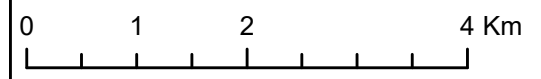
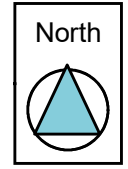
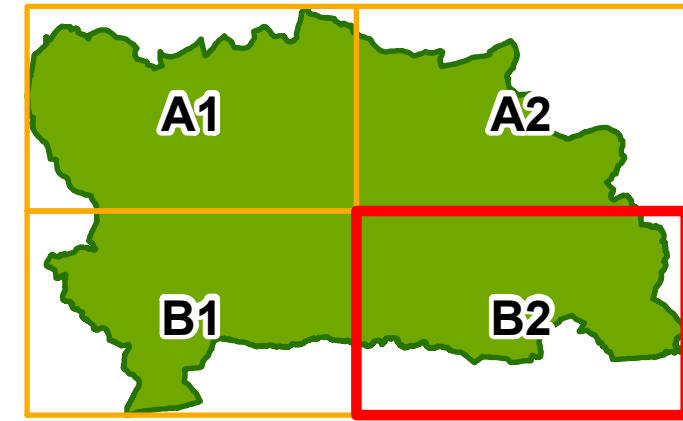
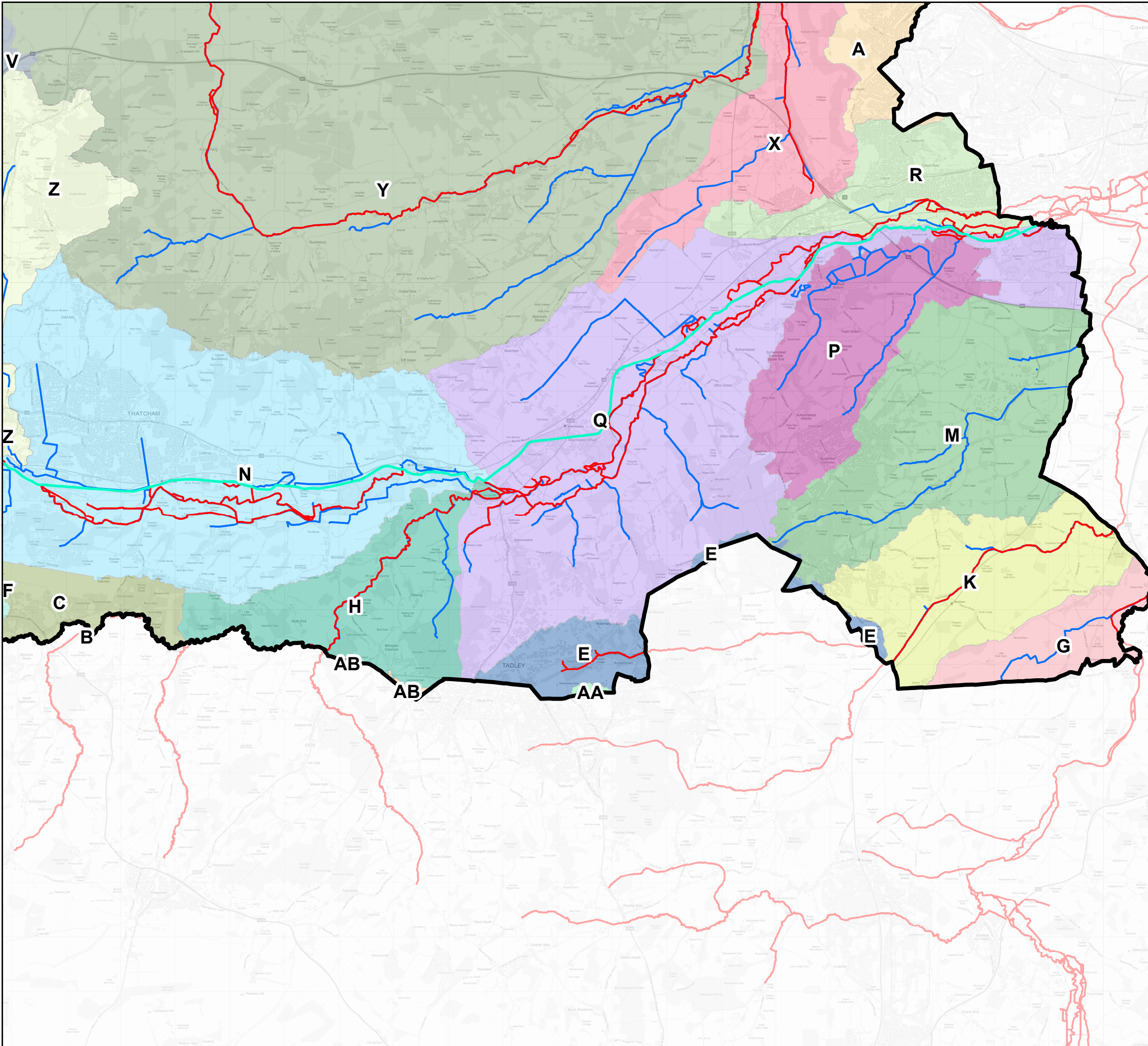
Strategic Flood Risk Assessment - Level 1
 Appendix D - Watercourse Catchments



Contains Ordnance Survey data © Crown copyright and database right 2017.
 Contains public sector information licensed under the Open Government Licence v3.0.

- Legend**
- West Berkshire Boundary
 - Kennet and Avon Canal
 - Main Rivers
 - Ordinary Watercourses
- Main River Catchment Areas**
- C - Enborne (Burghclere Brook to Kingsclere Brook)
 - D - Enborne (Source to downstream A34)
 - F - Enborne (downstream A34 to Burghclere Brook)
 - I - Inkpen Stream (source to Kennet)
 - J - Shalbourne (source to Kennet at Hungerford)
 - L - Kennet and Avon Canal and Dun above Hungerford
 - N - Kennet (Lambourn confluence to Enborne confluence)
 - O - Froxfield Stream
 - S - Middle Kennet (Marlborough to Hungerford)
 - T - Middle Kennet (Hungerford to Newbury)
 - V - Winterbourne
 - W - Bourne Rivulet
 - Y - Pang
 - Z - Lambourn (Source to Newbury)

Strategic Flood Risk Assessment - Level 1
 Appendix D - Watercourse Catchments



Contains Ordnance Survey data © Crown copyright and database right 2017.
 Contains public sector information licensed under the Open Government Licence v3.0.

- Legend**
- West Berkshire Boundary
 - Kennet and Avon Canal
 - Main Rivers
 - Ordinary Watercourses
- Main River Catchment Areas**
- A - Thames Wallingford to Caversham
 - AA - Silchester Brook
 - AB - Baughurst Brook
 - B - Ecchinswell Brook (source to Enborne)
 - C - Enborne (Burghclere Brook to Kingsclere Brook)
 - E - West End Brook (tributary of Foudry Brook)
 - F - Enborne (downstream A34 to Burghclere Brook)
 - G - Loddon (Sherfield on Loddon to Swallowfield)
 - H - Lower Enborne
 - K - Foudry Brook (West End Brook to M4)
 - M - Burghfield Brook
 - N - Kennet (Lambourn confluence to Enborne confluence)
 - P - Clayhill Brook
 - Q - Kennet and Holy Brook
 - R - Holy Brook
 - V - Winterbourne
 - X - Sulham Brook
 - Y - Pang
 - Z - Lambourn (Source to Newbury)

Strategic Flood Risk Assessment - Level 1
 Appendix D - Watercourse Catchments