

# Linear Park, Calcot

West Berkshire Council,  
Transport and Countryside Service  
*A Cleaner, Greener West Berkshire*



## Contents

<b>1</b>	<b>INTRODUCTION TO THE MANAGEMENT PLAN</b>	<b>4</b>
<b>2</b>	<b>SITE PLAN</b>	<b>5</b>
<b>3</b>	<b>HISTORY OF THE LOCAL AREA</b>	<b>7</b>
3.1	THE RIVER HOLY BROOK	7
3.2	THE PARISH OF HOLYBROOK	7
<b>4</b>	<b>MANAGEMENT STRUCTURE</b>	<b>8</b>
<b>5</b>	<b>WIDER POLICY CONTEXT</b>	<b>9</b>
<b>6</b>	<b>LOCAL CONTEXT</b>	<b>10</b>
6.1	POPULATION	10
6.2	AGE STRUCTURE 2015	11
6.3	CONSULTATION	11
<b>7</b>	<b>A WELCOMING PLACE</b>	<b>12</b>
7.1	ACCESS	12
7.2	DISABILITY ACCESS	13
7.3	CAR PARK	13
7.4	SIGNAGE	13
7.5	BUSES	14
<b>8</b>	<b>HEALTHY, SAFE &amp; SECURE</b>	<b>15</b>
8.1	CONTROL OF DOGS	15
8.2	CHILDREN'S PLAY AREAS	16
8.3	ANTI SOCIAL BEHAVIOUR	16
8.4	MOTORBIKES	17
8.5	ROUGH SLEEPERS	17
8.6	FENCING	17
8.7	PERSONAL SECURITY IN THE PARK	18
8.8	WALKING FOR HEALTH	18
8.9	TRIM TRAIL PROJECT BY FRIENDS OF LINEAR PARK	19
8.10	THE MEASURED MILE	22
<b>9</b>	<b>CLEAN &amp; WELL MAINTAINED</b>	<b>23</b>
9.1	WASTE MANAGEMENT	23
9.2	GROUNDS MAINTENANCE	24
9.3	BUILDING MAINTENANCE	24
9.4	GENERAL MAINTENANCE	25
9.5	PATHWAYS	25
9.6	ENVIRO-CRIME & GRAFFITI POLICY	25
<b>10</b>	<b>A SUSTAINABLE PARK</b>	<b>27</b>
	CLIMATE CHANGE	27
10.1	WASTE & RECYCLING	27
10.2	PESTICIDE POLICY	27
10.3	USE OF RESOURCES	28

<b>11</b>	<b>CONSERVATION &amp; HERITAGE .....</b>	<b>29</b>
11.1	A VALUABLE HABITAT FOR WILDLIFE .....	29
11.2	CONSERVATION WORK.....	29
11.3	CREATING A SENSE OF OWNERSHIP.....	30
11.4	WILDLIFE THROUGH THE SEASONS.....	30
11.5	SEDGE BEDS .....	31
11.6	THE DRAINAGE DITCHES .....	31
11.7	BALANCING PONDS.....	32
11.8	WOODLAND.....	32
11.9	SUMMER MEADOWS.....	35
11.10	BIRDS .....	37
11.11	WATER VOLES.....	37
<b>12</b>	<b>COMMUNITY INVOLVEMENT .....</b>	<b>39</b>
12.1	HOLYBROOK PARISH PLAN – ‘A VISION FOR NOW & THE NEXT 15 YEARS’ .....	39
12.2	THE FRIENDS OF LINEAR PARK .....	40
12.3	COMMUNITY EVENTS .....	44
12.4	THE BEANSHEAF CENTRE.....	48
12.5	THE GARAGE .....	48
12.6	WORKING WITH THE COMMUNITY .....	49
<b>13</b>	<b>MARKETING .....</b>	<b>51</b>
13.1	MARKETING STRATEGY .....	51
<b>14</b>	<b>MANAGEMENT .....</b>	<b>54</b>
14.1	VISION STATEMENT FOR LINEAR PARK .....	54
14.2	MANAGEMENT STRATEGY.....	54
14.3	FINANCIAL STRATEGY .....	55
<b>15</b>	<b>WHERE DO WE WANT TO GET TO?.....</b>	<b>56</b>
<b>16</b>	<b>HOW WILL WE GET THERE? .....</b>	<b>58</b>
16.1	ACTION AND DEVELOPMENT PLAN FOR 2015-2020 .....	58
<b>17</b>	<b>HOW WILL WE KNOW WHEN WE’VE ARRIVED? .....</b>	<b>69</b>
<b>18</b>	<b>APPENDICES .....</b>	<b>70</b>
18.1	GREEN FLAG CRITERIA .....	70
18.2	EDUCATIONAL NOTICE TO HELP DISCOURAGE FLY TIPPING .....	72
18.3	GOOD DOG OWNER GUIDE .....	73
18.4	DDA REPORT .....	74
18.5	REGIME OF MAINTENANCE.....	76
18.6	ENVIRONMENTAL POLICY .....	77
18.7	PLAYGROUND INSPECTION CRITERIA EXAMPLE.....	78
18.8	SAFETY AUDIT FOR LINEAR PARK.....	79
18.9	WILDLIFE LISTS .....	87
18.10	FOLP TASK GROUP DATES .....	91
18.11	EXTRACTS FROM FRIENDS OF LINEAR PARK LEAFLET.....	92
18.12	FLYER ADVERTISING LOCAL ACCESS FORUM EVENT IN LINEAR PARK 2012 .....	93
18.13	EXTRACTS FROM HOLYBROOK PARISH NEWSLETTER JANUARY 2019.....	94
18.14	WILDLIFE NOTICE AS DESIGNED BY FOLP DISPLAYED IN PARK NOTICE BOARDS .....	95
18.15	PRUDENTIAL VOLUNTEERS 18 MAY 2012.....	96

## Where Are We Now?

### 1 Introduction to the Management Plan

Linear Park is an important green space for many residents in Calcot and the strength of the 'Friends' group demonstrates the pride local people take in protecting and using this beautiful open space in an otherwise built up area. The management plan for this park has been produced through close consultation between West Berkshire Council, Holybrook Parish Council, the Friends of Linear Park and local residents and park users. The plan addresses the key issues affecting this open space and focuses on improving the park to make it accessible to all.

This management plan is closely linked to the Holybrook Parish Council Plan and it works in unison to improve the parish. The Parish Council Plan was created through sending out a questionnaire to all homes in the Parish. 700 or 27% of the questionnaires sent out were completed and returned. The responses provided important information about the strengths and the weaknesses of the area including the importance of Linear Park. From the responses received, this management plan has been able to focus on the positives and negatives that users encounter while in the park and create an achievable plan for improvement. Further consultation has been carried out with key stakeholders:

*Holybrook Parish Council*

*Ward Members*

*Council Officers*

*Friends of the Linear Park Group*

*Holybrook Community Centre*

*Continental Landscapes Ltd (grounds maintenance contractor since January 2018)  
(formerly ISS Facilities Services)*

*BBOWT (Berkshire, Buckinghamshire & Oxfordshire Wildlife Trust)*

*Walking the Way to Health Coordinator and Walk Leaders*

*Local residents*

*Volunteer Groups –Reading Outdoor Group, CROW*

*Local Football Clubs*

Further copies of the plan are available by contacting Paul Hendry, see below for details. The plan can also be found on the Council's web site [www.westberks.gov.uk](http://www.westberks.gov.uk). (Key 'Linear Park' into the search engine).

<b>Address:</b> Transport & Countryside West Berkshire Council Market Street Newbury Berkshire RG14 5LD	<b>Tel:</b> 01635 519858  <b>Email:</b> paul.hendry@westberks.gov.uk
--	---

## 2 Site Plan

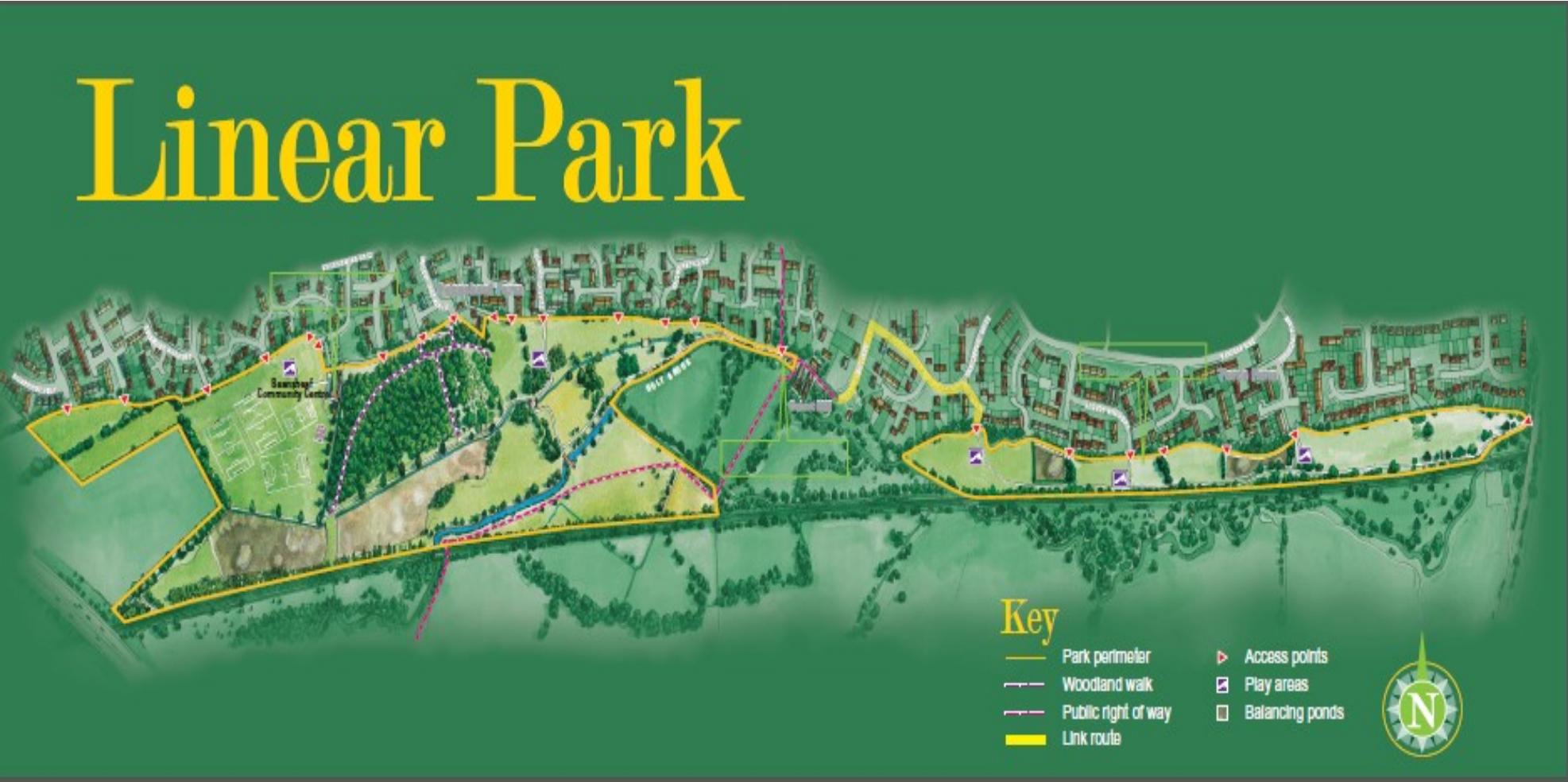
**Name of Site:** Linear Park

**Address:** Charrington Road, Calcot, Berkshire, RG31 7AW

<b>Name:</b>	<b>Holybrook Linear Park</b>
<b>Grid Reference:</b>	<b>SU659713</b>
<b>Area</b>	36 Hectares
<b>Tenure</b>	The site is owned and managed by West Berkshire Council working in partnership with Holybrook Parish Council and the Friends of Linear Park. Tel: 01635 519675 <a href="http://www.westberks.gov.uk">www.westberks.gov.uk</a>
<b>Site Description</b>	The park covers 36 hectares of woodland, river basin and meadow grassland. The park is adjacent to two housing estates known locally as Beansheaf to the west and Fords Farm to the east. Mill lane divides the two estates. The west section of the park provides sports pitches, the Beansheaf Community Centre, a basketball court, skate park, changing rooms, a young people's outdoor shelter, 2 playgrounds for 5-12 year olds, grass meadows, sedgebeds, woodland, river and the main car park. The east section of the park offers 3 further play areas for 3-14 year olds, a trim trail, balancing ponds, walkways, access to river and open park land. The main access is via Charrington Road although there are a further 27 access points.
<b>Access</b>	The park can be accessed by car and cycle via Charrington Road. Cycle access is also available from all other access points. Pedestrians can access the park via 28 access points spread throughout both sections of the park. See park map on page 6 for locations.
<b>Toilets</b>	There are 24hr accessible toilet facilities located at the Beansheaf Centre which can be accessed with a RADAR key. Toilet facilities are available in the Beansheaf Centre for all Centre users.
<b>By Car</b>	From Newbury, continue along the A4 Bath Road towards Reading. After crossing M4, turn right at first roundabout into Charrington Road. and follow sign for Linear Park. From Reading, follow the A4 towards Newbury, on entering Calcot, turn left at traffic lights onto Charrington Road. Bear right at next roundabout and follow sign for Linear Park.
<b>By Bus</b>	Reading buses, premier route 26 from Reading and Calcot provides a service stopping along Fords Farm and Beansheaf. For more information, seach Reading travel info.

Map of Park

# Linear Park



### 3 History of the Local Area

#### 3.1 *The River Holy Brook*

There is record of the Holy Brook in the Domesday Book (1086). The Holy Brook was originally a natural branch of the Kennet. It was harnessed as a serial millstream and supplied water to Reading Abbey, founded in 1121.

The Holy Brook is about six miles in length and for most of its length the brook is surrounded by beautiful meadows and ancient hedgerows. The last mile of the brook now courses beneath Reading town centre, emerging again where it joins the River Kennet at the Abbey Mill.



#### 3.2 *The Parish of Holybrook*

Holybrook parish was created in the year 2000. It was formerly the eastern tip of the parish of Theale, which then became separated by the M4 motorway.

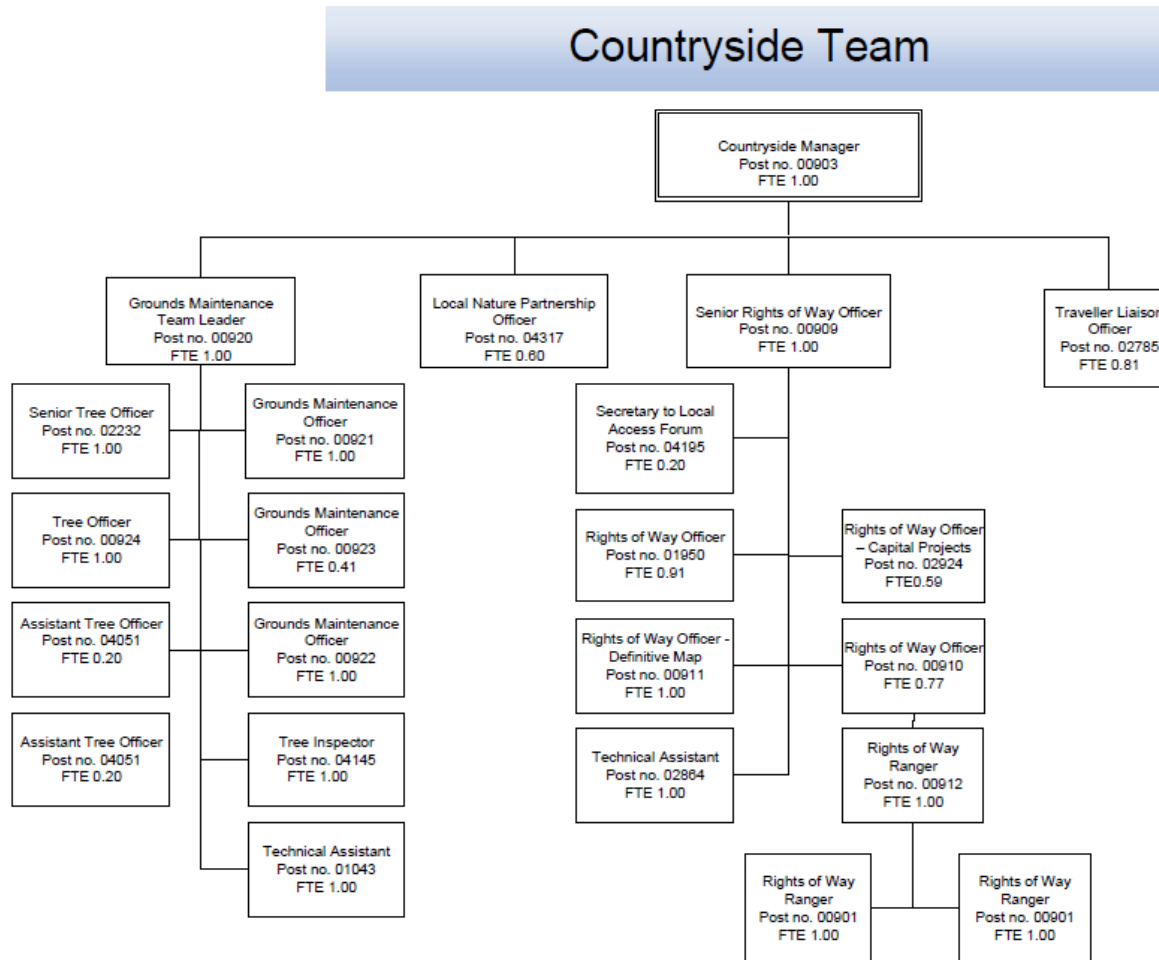
The village of Calcot (previously known as Calcot Green) used to belong to the Manor of Tilehurst. It is now shared between the parishes of Holybrook and Tilehurst.



The parish now mainly consists of two large housing developments, Fords Farm and Beansheaf, which were built on farmland in the 1970s and 1980s.

## 4 Management Structure

Linear Park is managed by West Berkshire Council's Grounds Maintenance (GM) team, which currently forms part of the Transport and Countryside Service. The Council's GM team works in partnership with Holybrook Parish Council and the Friends of Linear Park in the management of the park.



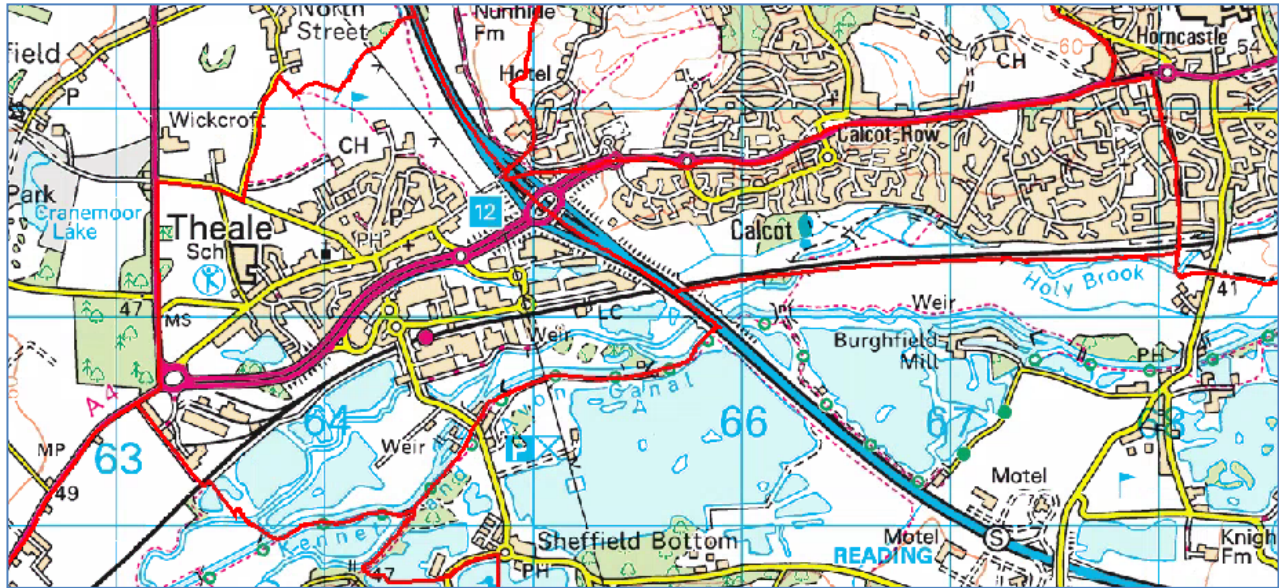


## 5 Wider Policy Context

In accordance with the objectives set out in the Council's Strategy, the Planning and Countryside Service aims to provide parks that are clean, safe, welcoming, accessible and enjoyable to visit.

Priority	Parks Contribution
<p><b>Protecting the Environment</b></p>	<ul style="list-style-type: none"> <li>• <i>Recycling &amp; Waste:</i> A new grounds maintenance contract commenced in January 2018 with Continental Landscapes Ltd. The contract requires that all green waste be composted and all litter collected be recycled where possible. Use of peat and pesticides is discouraged. All litter bins and dog bins are emptied up to three times a week and litter is 'picked' three times a week. Regular visits to the park are also made by Grounds Maintenance Officers who pick up litter and recycle where appropriate</li> <li>• <i>Graffiti:</i> Offensive graffiti is removed by Grounds Maintenance contractors as soon as it is reported. Other graffiti is assessed for location and content before removal is ordered.</li> <li>• <i>Vandalism:</i> All vandalism within the parks is repaired as soon as it is reported. All safety repairs are carried out immediately.</li> </ul> <p>Members of the public can notify the Council of any graffiti or vandalism by contacting the Customer Services team on 01635 519080. More details can be found on the West Berkshire Council website <a href="http://www.westberks.gov.uk">www.westberks.gov.uk</a></p>
<p><b>Promoting a Vibrant District</b></p>	<p>Clean, attractive and accessible parks and open spaces increase the vibrancy of a built up area. Linear Park offers a tranquil green space in Calcot. The park is well maintained and made accessible to all of West Berkshire's residents and visitors. Regular community events are held in the parks.</p>
<p><b>Caring for and Protecting the Vulnerable</b></p>	<p>Accessible parking bays are clearly marked in the car park. There is access to the park from this car park for wheelchairs, pushchairs and buggies. Some other access points allow similar access. A teenage shelter, basketball court, grass pitches and skate park provide important facilities within the park for local, young people. Several walkways have been laid to scalplings to provide all-weather access for all.</p>

## 6 Local Context



In terms of population, Holybrook is the fourth largest parish council within the unitary authority of West Berkshire. The boundaries of the parish run from the M4 in the west as far as Horncastle to the East, where it adjoins the boundary of Reading Borough Council. The A4/Bath Road forms the northern boundary and the Great Western Railway marks the southern boundary.

Holybrook is now the fourth largest parish/town council in terms of population with just over 7000 residents in West Berkshire District.

Holybrook has a large, transient population. There is no traditional village centre as such and the parish faces problems with instilling a sense of community spirit. Continuous efforts are made by the Parish Council, The Community Centre and the Kennet Valley Free Church to develop the idea of community within this parish.

### 6.1 Population

Holybrook is one of 60 parishes which make up the district of West Berkshire. The population of Holybrook in 2011 was 6919 people compared to 153,822 in West Berkshire as a whole, constituting 4.5% of the total population. 49.4% of Holybrook's population was male, 50.6% was female. 16.7% of Holybrook's population belongs to an ethnic minority group compared with 9.6% for West Berkshire as a whole. Unemployment was 3.1% compared to West Berkshire's 2.9%.

The break-down of ages can be found table 6.2 below.

## 6.2 Age Structure 2015

	Total	0-4	5-15	16-19	20-44	45-64	65+
<b>Holybrook</b>	6919	6.8%	12.9%	5.1%	5.9%	59%	10.4%
<b>West Berkshire</b>	153822	6.5%	13.7%	4.9%	.8%	54.8%	15.4%

Source: ONS, Nomis 1 June 2015

## 6.3 Consultation

This management plan is informed by:

- Discussions with local interest groups and users of Beansheaf Community Centre.
- Feedback from Parish Council meetings.
- Feedback from Neighbourhood Action Group meetings
- Regular site visits by West Berkshire Council Grounds Maintenance Officers.

## 7 A Welcoming Place

### 7.1 Access

Linear Park is a very accessible park providing regular access points from the housing estates which surround it on the Northern side. There are a total of 28 access points into the park.



The points of access are marked by a variety of different barriers, be it kissing gate, fixed posts or a simple narrow gap. The surfaces also vary from tarmac, to compacted stone, to grass. The majority of access gates feature a welcome sign with visitor behavioural guidance.

## 7.2 Disability Access

Although the majority of kissing gates are described as “medium mobility”, the main access for wheelchair users is through the car parking area off Charrington Road. Three accessible parking bays are located near the Community Centre. Many of the pathways have now been laid to scalplings to improve access and provide circular routes for wheelchairs and pushchairs. The kissing gate access to Albury Gardens was tarmaced and the kerb dropped to improve accessibility in 2016.

## 7.3 Car Park

The main gateway to the park and car parking is situated off Charrington Road, sign-posted ‘Beansheaf Community Centre and Linear Park’. The car park provides parking for around 54 cars, including 3 accessible bays and cycle racks.

The car park is locked daily by the Beansheaf Centre caretaker:

November to March from 7pm – 7am  
April to October from 10pm – 7am.

An out of hours number is available on site to call should anyone become locked in.

The car park is lit at night from dusk until around 11pm.

In 2015 an overflow car park was created to accommodate 20 extra vehicles. A height barrier was also installed to prevent access of unsolicited vehicles.

## 7.4 Signage

At certain points around the park are four welcome boards; outside the Beansheaf Community Centre, at Albury Gardens, at the entrance to the Mill and at ‘Pooh Bridge’ - which links to national rights of way network. These signs have improved navigation and accessibility for first time visitors and also allow information about forthcoming events or nature notes to be displayed.



Holybrook Linear Park is bisected into two halves by the ancient Mill Lane. These sections are known locally as Beansheaf (or Holybrook) to the west and Fords Farm (or Linear Park) to the east. The Beansheaf section of the park can be accessed from the

Fords Farm section by walking along Mill Lane, a public right of way. The welcome signs display an easy-to-read map highlighting this information, therefore assisting people to make their way from one section of the park to the other, coupled with the addition of the new waymarker signs. Continued consultation with park users will highlight if there is a need to install more signage.



### **7.5 Buses**

There is a frequent bus service from central Reading to Calcot, stopping at Charrington Road – premier route 26 with Reading Buses. See [www.reading-buses.co.uk](http://www.reading-buses.co.uk) for timetable.

All Reading buses have wide doors and provide access for wheelchairs and buggies.

## 8 Healthy, Safe & Secure

### 8.1 Control of Dogs

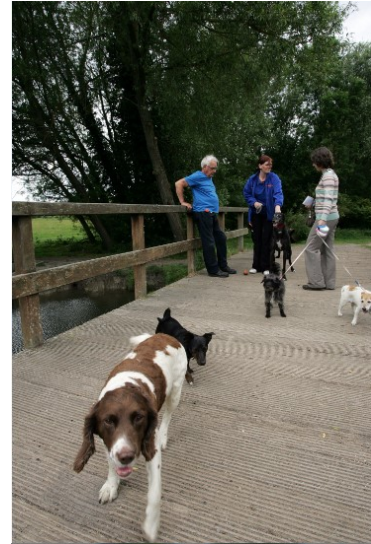


The Linear Park is an extremely popular area with dog walkers who have their own Facebook page. There is good provision of dog bins and most access points to the park have a bin sited beside them. The dog bins are emptied three times a week.

The Council has several information pages on its website which can be found by typing “dog” into the search box on the main page.

These include:

- Report dog fouling/Mapping dog fouling
- Report a problem with a Dog Waste Bin
- Animal Warden Service
- Information Leaflet - Dog Fouling
- Information Leaflet – Good Dog Guide
- Information Leaflet - Dog and Bone Lost Dog Test
- Services



It is proposed that with these guides and through close working with the dog warden, people will be educated in clearing up after their dogs and exhibit suitable control of dogs in public places.

In order to prevent dog fouling becoming a major problem at Linear Park, the Holybrook Parish Council website encourages local people to report dog owners who allow their dogs to foul in public. On-the-spot fines of £50 are currently in place and the dog warden and PCSOs are working together to deter offenders.

Dog bins in Linear Park are emptied up to three times a week. Regular park inspections are carried out by West Berkshire Council Grounds Maintenance Officers and any vandalism or damage carried out to dog bins is quickly dealt with.

In 2015/6 Linear Park trialled free dog bag dispensers, funded by sponsorship from local businesses and using bio-degradable bags. The bags proved popular and there was little ASB associated with the dispensers. There are now 37 dispensers district wide on a two year sponsorship programme.

The Parish Council has recently started an anti-foul poster campaign on a month-on month-off regime where the design changes every other month to encourage people to take note of the posters.

## **8.2 Children's Play Areas**

West Berkshire Council owns and manages 5 play grounds within Linear Park:

1. Situated off Beansheaf Community Centre for children aged 2-13yrs old.  
Refurbished in 2009.
2. Situated off Palmera Avenue for children aged between 6-12 yrs old.  
Refurbished in 2012.
3. Off Hawkesbury Drive, Fords Farm for children aged between 3-10 yrs old.  
Refurbished in 2011.
4. Off Albury Gardens, Fords Farm for children aged between 8-14 yrs old.  
Refurbished in 2001. Due for refurbishment 2022\*.
5. Off Burbidge Close, Fords Farm for children aged between 3-8 yrs old.  
Refurbished in 2004.

The children's play areas are dog free zones and have self-closing gates to prevent unwanted access by dogs.

The children's play areas are inspected and maintained to meet current recognised safety standards EN 1176 & EN1177. The play areas are inspected and cleaned thrice weekly to ensure that they are maintained in a safe condition by Continental Landscapes. See Appendix 18.7 for a sample of playground inspection criteria.

The Royal Society for the Prevention of Accidents (RoSPA) carry out full safety inspections quarterly. Defects are rectified using a dedicated play area maintenance budget. Risk assessments are reviewed annually.

\*Ten year play area refurbishment plan. In 2021, WBC will be compiling a plan to refurbish the districts' play areas based on the current health and safety, life span, play value and the inclusivity of equipment.

## **8.3 Anti social behaviour**

From time to time young people may gather in play areas not designed for their age group. This can lead to complaints from local residents about noise, vandalism or disruptive behaviour. The Council discourages this in the following ways:

- By placing signage at play areas indicating the intended age group for which the play area is suitable.
- By working with planners to ensure that new play areas are properly overlooked and provide opportunities for teenagers.
- By encouraging refurbishment projects to target older age groups where suitable.
- By reporting vandalism to the police.
- By attending the 6 weekly Neighbourhood Action Group (NAG) Meetings held in the Community Centre

Generally, this is an itinerant problem with the groups of young people moving elsewhere after a time. However, where problems persist, local residents can become frustrated. In these cases the Council relies on support from the police to take action.

Teenage activities in Linear Linear Park include a basketball court, the skate park (which was completed in 2011) and the football pitches. Although the main goals are taken down over the summer for pitch renovations, a set of small goals is left up for kick-about if requested. All these facilities are located outside the Beansheaf Centre.





*Basketball court, skate park and outdoor shelter*

#### **8.4 Motorbikes**

Some people on motorbikes are able to access the park through the kissing gates and these “joy-riders” are a continual problem. The park is used as a short cut to the canal towpath and fields beyond.

The Police are seriously committed to controlling illegal motorbikes and the topic is regularly discussed at the Neighbourhood Action Group meetings. It has been a challenge to catch offenders due to:

- the numerous access points to and from the park,
- the fact that the Police are not permitted to chase motorbikes
- a good description is required of the offender/motorbike (unfortunately the usual attire is “hoodies” and rarely any registration plates)

However, by carrying out regular walkabouts in the park with members of the public and Friends Group and working with neighbouring policing units, the Police have successfully apprehended and confiscated motorbikes from irresponsible drivers under s59 Seizure of Vehicles Police Reform Act 2002.

#### **8.5 Rough Sleepers**

Occasionally tents are pitched in the park, despite the park not being an official camp site. These may either be homeless people or simply recreational campers. WBC has a Preventing Homelessness and Rough Sleeping Strategy 2020-2025 (details on WBC web site). The campers are assessed and welfare issues addressed. Should an eviction be necessary (as a last resort), the council considers the best legal course of action. Recreational campers are asked to leave and to take their rubbish with them. If tents appear to have been abandoned, then the Council serves a seven day notice of its intention to remove the item(s). These items are then stored for 14 days to allow collection, before disposal.

#### **8.6 Fencing**

Much of the fencing around the park constitutes private resident fences. At access points the fencing is the responsibility of the Council. The action and development plan aims to replace those sections which present a hazard or allow illegal access to the park resulting in anti-social behaviour. These areas have been highlighted by local residents and park users.

## **8.7 Personal Security in the Park**

Resulting from the survey, the biggest problems reported within the Linear Park were litter, vandalism and dog fouling, all problems which residents felt would be best addressed with increased police presence, better communication between local communities and police forces and more CCTV surveillance. In response to these concerns, the following groups have been set up:

- NAG (Neighbourhood Action Group). NAG is a partnership between police, councils and the Holybrook community. It meets every 6 weeks at the Beansheaf Community Centre and tackles anti-social behaviour in the Parish. The NAG can be contacted via the Parish Council on 0118 945 4339. The West Berks Grounds Maintenance Officer attends these meetings regularly. There is an open forum for members of the public at the start of these meetings.
- Holybrook Warden. Currently managed and funded by Holybrook Parish Council, the warden patrols the parish each weekday. Their aim is to be the 'eyes and ears' of the community and duties include reporting antisocial behaviour, locating fly tipping hot spots, identifying and, if possible, rectifying potential hazards, removing litter and rubbish and re-stocking dog bag dispensers.
- The West Berkshire Council website contains information on reporting the following anti-social behaviour (information is also available in the Parish office): arson, abandoned trolleys, abandoned vehicles, aggressive/abusive people, criminal damage, dangerous driving/riding, discarded needles/syringes, dog fouling, fly-tipping, graffiti, hoax calls, inappropriate use of motorbikes, litter, neighbour nuisance, noise nuisance, public order offences and speeding motorists.
- Improved CCTV surveillance at the Community Centre. The system was updated and improved in 2017 in a project joint funded between Holybrook PC and WBC.

## **8.8 Walking for Health**

The Walking for Health Initiative has long been successful in West Berkshire. The scheme is run by The Public Health and Wellbeing Team at West Berks Council and encourages people of all ages and backgrounds explore the outdoors, discover new places and meet new people.

Walking is known to:

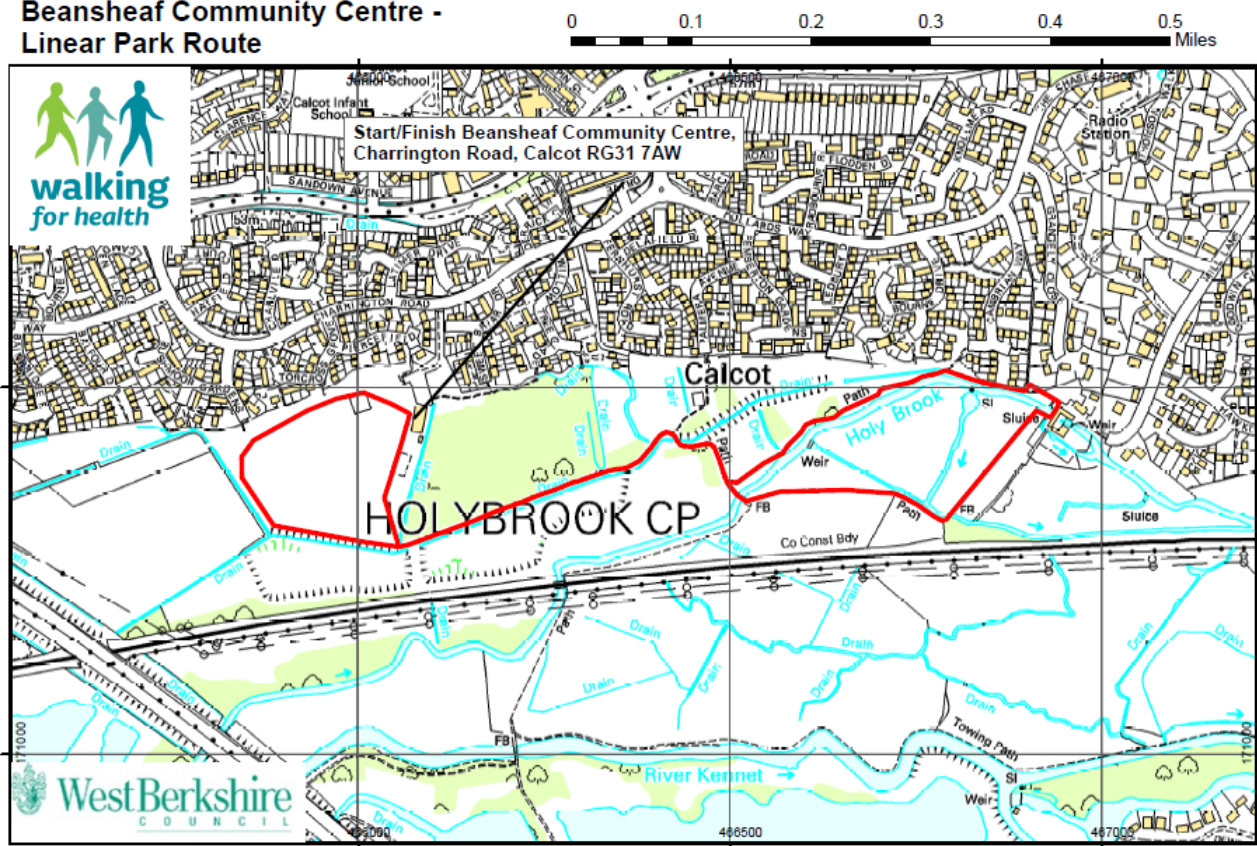
- Reduce stress
- Improve weight control
- Increase energy levels
- Keep your heart healthy
- Increase confidence
- Improve mental health

A walk at Linear Park was first trialled in 2007. It proved successful and 14<sup>th</sup> February 2008 saw the start of the Linear Park walk. The walk meets every first and third Monday of the month at 10:30am. The walk lasts 45 minutes, is suitable for all walkers,

and is followed by a cup of tea. Volunteer walk leaders are fully trained in leading these walks.

For more information contact Public health on 01635 503437

### Beansheaf Community Centre - Linear Park Route



### 8.9 Trim Trail Project by Friends of Linear Park

A survey carried out in 2015 by Friends of Linear Park showed that there was a need for some outdoor fitness equipment in Linear Park. This was coupled with the fact that there have been requests for more facilities in the eastern section of the park. Since the majority of sports facilities are located at the community centre in the west, it was decided that Fords Farm would be an ideal location for a linear Trim Trail featuring a series of timber exercise stations designed to promote physical fitness training. Members of various local fitness groups were consulted in order to select the most appropriate types of equipment to suit all abilities.

In a challengingly wet April 2018, nine items were installed, each item displaying a notice explaining how to use the equipment correctly.

The project was funded by donations from Holybrook Parish Council, Section 106 monies and Member's Bids from West Berkshire Council.

The Trim Trail was officially opened on 29 May 2018 by Cllr Peter Argyle.

Appearance on Thames Valley Tonight June 2018



# Linear Park Trim Trail Equipment



## 8.10 The Measured Mile

The Measured Mile is a marked route around Linear Park which measures exactly a mile. Walkers are guided by wooden stakes with coloured bands placed at junctions and the occasional map displaying the route. This was set up by Friends of Linear Park in December 2017.



## 9 Clean & Well Maintained



Linear Park is a popular site for recreational walking. The park is well maintained, clean and tidy. However, feedback from the Parish Council questionnaire showed that more needed to be done to combat litter, dog fouling and vandalism.

### **Actions taken:**

- Contractors Continental Landscapes (CL) empty dog and litter bins up to three times a week.
- Contractors and Friends of Linear Park regularly litter pick and recycle where possible.
- A dedicated, uniformed dog warden is in post by the Council who patrols all parks in West Berkshire. The Dog Warden can educate and also issue on the spot fines to dog owners who allow their dog to foul in Linear Park.
- Park users are encouraged to report any dog fouling incident they see.
- A Good Dog Owner Guide (see Appendix 18.3) has been produced by the Council and is available throughout the district and on the Council's website.
- On line or telephone complaints or requests for service can be made to West Berkshire Council Customer Services and these are referred to the relevant officer.

### **9.1 Waste Management**

There is a good provision of dog and litter bins throughout Linear Park, which are routinely emptied up to three times per week by CL. This waste is currently sent for incineration. All green waste from the park is composted. Wood chips arising from tree work in the park are frequently used to re-surface paths in the park or mulch the shrub beds. Following community litter picks, plastics and glass are separated and recycled at the local supermarket.

## **9.2 Grounds Maintenance**

The West Berkshire Council grounds maintenance team oversees the day to day maintenance of the park. The contractor, Continental Landscapes Ltd, is employed by the Council to carry out this maintenance. Work carried out by contractors is regularly inspected. The duties of the contractors include sports turf maintenance, general turf maintenance, tree management, hedge maintenance, litter management, shrub and tree planting and minor repairs to park's infrastructure and play areas. The regime of maintenance can be found in Appendix 18.5.



Any large scale tree works are carried out by specialist tree contractors. The Council's tree contract was tendered in 2019 and awarded to Connick Tree Care. Trees in the park are surveyed every two years and remedial works prioritised regarding safety and tree health. New planting is carried out to replace trees which have died naturally, been removed for safety reasons or succumbed to vandalism.

In 2012 to celebrate the Diamond Jubilee, the Friends of Linear Park planted over 100 saplings to create The Jubilee Wood in a quiet corner of the park.

In 2019 a further new woodland area was created using whips donated by Network Rail and Trust for Conservation Volunteers.

## **9.3 Building Maintenance**

The West Berkshire Council grounds maintenance team is responsible for maintaining the sports changing rooms and public toilets located in the southern half of the Beansheaf Centre building. The office and meeting rooms on the northern end are owned and maintained by Holybrook Parish Council.

A full mechanical, electrical and structural report is carried out on the changing rooms every 5 years.

The changing rooms and toilets are cleaned weekly during the football season. Service contracts are in place for the hot water and central heating boilers, mixing valves, safety lighting, fire extinguishers, portable appliances, legionella testing and fire risk assessments in this building (FLARE).

Motion sensors were fitted to the lights in the changing rooms reduce electricity wastage.



## **9.4 General Maintenance**

Where park furniture presents a hazard to park users or is deemed unsafe, immediate action will be taken to remove or rectify the hazard. The Friends of Linear Park assist in the park's maintenance with their regular work parties, tree planting, bench and railing painting etc.

Areas of worn ground and pot holes within Linear Park are repaired through back filling and seeding. There is no irrigation undertaken in the park. Following the end of the playing season each May, the football pitches are renovated so that all worn areas are grassed over again in time for the new season in September.

## **9.5 Pathways**

The park is popular with walkers and providing safe and accessible walkways within the park whilst retaining the 'wilderness' quality of the area is important. In 2005 and 2013 some 3.5km of compacted stone was laid to create all-weather pathways in both sections of the park incorporating many of the "desire lines". These paths provide level, mud-free access, whilst being in-keeping with the semi-rural disposition of the park.



In 2018 Holybrook Parish Council received some funding from the Community Infrastructure Levy. The Friends of Linear Park submitted two projects for funding. Following a community vote, both projects were successful

These were:

1. To improve the footpaths in Linear Park
2. To create a dog free picnic area, picnic benches and cycle racks

As a direct result of this funding, in 2019 new all weather paths were constructed beside the ball court/skate park and through the woodland, linking up already existing paths. The surface of the path to the rear of the community was also improved.

## **9.6 Enviro-Crime & Graffiti Policy**

The Council aims to remove all reported graffiti from public areas as soon as possible, and prioritises the removal of foul and abusive graffiti. There is a slightly more relaxed attitude to graffiti on the skate park as it can also be considered as "art".

Vandalism and graffiti within Linear Park can be reported in a number of different ways; the public can contact:

- The Council via Customer Services on 01635 519080 or email at [customerservices@westberks.gov.uk](mailto:customerservices@westberks.gov.uk) (numbers can be found on our website and on the park signs).
- The Holybrook Parish Council Office in the Beansheaf Centre in person or on 0118 945 4339

All safety repairs will be carried out immediately.

*Unacceptable tagging of structures*

vs

*“Art”*



## **10 A Sustainable Park**

### ***Climate Change***

West Berkshire hosted a Climate Conference on 28 October 2019. The event was organised by West Berkshire Council following its declaration of a climate emergency in July 2019. It was one of the first initiatives to come from a new Environment Board established by the council which will create a new Environment Strategy 2020-30 and coordinate and oversee environmental projects. This strategy has five objectives:

1. Achieve carbon neutrality by 2030.
2. Responsible economic growth
3. Healthy communities
4. Resilient to climate change
5. Work with our communities

Particularly pertinent to Linear Park is item 3. Healthy Communities : Maintaining the environment in which we live so that our residents are able to benefit from good air quality and access to what they need to take part in an active lifestyle.

Until the new Environment Strategy is adopted, the current Environment Policy (see Appendix 18.6) is adhered to

### ***10.1 Waste & Recycling***

The Council aims to:

- Encourage people to change to a greener way of life
- Protect and enhance the natural environment of West Berkshire
- Increase recycling, and use more local resources, reducing dependence on goods and services from outside the district
- Keep West Berkshire clean

Increasing the recycling of all green waste collected from our parks and open spaces and promoting recycling within the parks is of great importance. The current grounds maintenance contract commenced in January 2018 with contractors Continental Landscapes Ltd, and requires that when possible all green waste be composted and all litter collected be recycled. Park litter bins are emptied up to three times a week and litter is regularly 'picked'. Eighteen dog bins are provided which are also emptied up to three times a week. Although it has been suggested that the Council combines the dog and litter bins as one unit, they are kept separate to avoid "contamination" of the litter by the dog waste, which then means it cannot be sorted and recycled.

Fallen or sawn timber is left on site in the park to be used as wood piles, providing important habitat and promoting a wildlife food chain.

### ***10.2 Pesticide Policy***

West Berkshire Council recognises the need to minimise adverse impact on the environment. The Council discourages the use of pesticides, a decision that has environmental benefits. Where pesticide use is absolutely necessary e.g. weed killing on

sports pitches, hard surfaces or around equipment, the grounds staff will use selective, non-residual herbicide applications to reduce environmental impact.

### **10.3 Use of Resources**

It is West Berkshire Council's responsibility to lead the way in cleaner, greener living and manage its parks in a way which reduces and removes any practices which have a negative effect on the environment. The Council will ensure that environmental priorities are integrated into the decisions it takes on the management of the parks and will seek to work within the principles laid out in the Environmental Policy for Linear Park.

The park encourages the use of bicycles by providing all weather pathways and cycle racks in the car park and at play areas. Cycle racks were added at three more play areas in 2019. Both sections of the park are easy to walk to with pavements being maintained to a high standard and personal security is ensured through street lighting and open planning. All green waste and litter collected from the parks is recycled where possible. Leaf mould and wood chip is composted and is used either on the pathways or off site.

Use of peat within the parks is avoided and use of pesticides is minimal. The Council ensures that all plants used within Linear Park are sourced from suppliers who use a peat free growth medium. Perennial planting is used rather than seasonal planting and planting is in keeping with the park's character and landscape. Whips are bare rooted. Timber used within the park is only purchased from suppliers who can guarantee their wood is from sustainable forests and is FSC approved. Irrigation is not used within the park except to water newly planted trees. The park's management contractors endeavour to use low emission plant equipment and machinery. Park benches and bins are made from low maintenance, recycled products where possible.

Continental Landscapes and Council staff carefully co-ordinate their maintenance regime in order to avoid unnecessary or multiple journeys.

# 11 Conservation & Heritage

## 11.1 A Valuable Habitat for Wildlife

Linear Park forms part of a 'green corridor'. This is an uninterrupted 6 mile stretch of green space from Theale reaching almost to central Reading along the course of the Holybrook River. It allows mammals, insects and birds to migrate easily increasing genetic diversity, refreshing populations and providing new food sources. This is important as broken habitats can cause food sources and populations to become isolated and sites to become more vulnerable to external pressures.

Although Linear Park is restricted by housing to the north, the M4 motorway to the west and railway to the south, the site provides a wide variety of different habitats, from mature deciduous woodland to flood plain, wetland water retention ponds and well-vegetated ditches and river. This provides a habitat for many different species throughout the year.

## 11.2 Conservation Work

The Friends group is instrumental in maintaining diversity within the park and providing an important habitat for a number of species through a dedicated programme of conservation management co-ordinated by the Grounds Maintenance Officer at West Berkshire Council. Conservation advice is sought from both external bodies (eg BBOWT) private specialists and the Council's own qualified staff.

Several of the habitats within the park have been artificially created to promote biodiversity such as the balancing ponds and the grassland meadows and regular work parties prevent these areas from regressing to scrub. Local residents and voluntary groups co-ordinate their activities to run these work parties in the park. The work parties carry out a variety of activities such as planting native flora and trees, managing the balancing ponds so they continue to act as an effective flood defence and as a wetland area for wildlife, removing dangerous trees from the park and leaving wood piles for insects, invertebrates and certain birds, erecting bird boxes in areas where there is a shortage of natural nest sites and monitoring the wildlife within the park.



*Ditch clearance*



*Tree planting*

### **11.3 Creating a Sense of Ownership**

The increasing pressure on green spaces in the South-East of England means that parks have become a vital public space resource. Encouraging local residents to engage with the wildlife on their doorsteps and working with younger generations to help them bond with and develop a life-long, positive relationship with nature, will ensure that green spaces such as Linear Park will continue to be protected and valued. Linear Park not only provides residents with sport facilities, playgrounds and a community centre, it allows them to interact directly with wildlife to help protect the local environment and to learn more about our native flora and fauna

The footpaths are another valuable asset allowing access to the park for people with disabilities and carers with prams and buggies.

Regular 'Friends News' is featured in the Parish newsletters (see Appendix 18.13), Parish website, social media and posted in notice boards. This helps get local people 'on-side' with the conservation work going on within the park, keeping them informed of what is being done and the environmental reasons behind it.

### **11.4 Wildlife through the Seasons**

Linear Park provides a year round habitat for wildlife. This is monitored by members of the Friends group. Below is a break-down of the seasons from Derek McEwan (FOLP). Full species lists of wildlife seen within the park can be found at Appendix 18.9. FOLP also produce a quarterly "What to look for" feature on the notice boards (Appendix 18.14).

**Winter:** Wintering finch flocks including siskins, goldfinches, redpoll and greenfinches enjoying food sources provided by alder trees. Migrant thrushes such as redwing and fieldfare have been seen. More common species such as long tailed, green and blue tit, green and greater spotted woodpecker, jay, robin, wren, dunnock and nuthatches are present.

Occasional snipe and water rail in streams and balancing ponds have been seen as have sittings of king fisher along the river. Foxes, roe deer and other mammals can be seen in the late evening. Raptors including red kites, sparrow hawks, kestrels and owls have also been observed.

**Spring:** The first wild flowers start to appear such as lesser celandine and primroses. Introduced species such as daffodils erupt and catkins appear on willow. Butterflies such as red admirals, holly blues, brimstones and speckled woods emerge from hibernation. Honey bees, hover-flies and other insects emerge. Sedge, reed and willow warblers along with blackcaps and chiffchaffs arrive. Nightingales may be heard, one was heard in Linear Park spring 2008. Water voles, frogs and toads are seen in the water channels. Kingfishers are occasionally seen along the Kennet.

**Summer:** Summer migrants such as swallow, swift and house martin return. Banded demoiselles and other dragonflies and damselflies are seen. Green veined whites, commas and day flying moths are present in the wooded glades and stag beetles emerge from our wood piles. Invertebrate numbers seem to be affected by seasonal variations in weather and the recent trends for cooler and wetter summers – with local flooding – and numbers have been depressed. Bats are seen hunting at dusk.

**Autumn:** Leaves changing colour and weather cooling. The first mushrooms and other fungi appear, berries including brambles, rose hips and sloes providing an important food source for birds and small mammals. Butterfly and dragonfly numbers decline with the cool weather, although some species seen into late November. Bird population changes with departure of summer migrants.

### **11.5 Sedge beds**

Linear Park contains 2 sedge bed areas. Vegetation noted in July 2007 included purple loose strife, saw sedge, meadow sweet, broadleaf willow herb, greater reed mace, soft sedge, patience dock, willow and alder. These plants help to pick up the heavy metals and pollutants from the surface water drainage.

Sedge cutting and clearance is required to reduce the build up of compost in the beds. Carried out in a four yearly cycle, the optimum months are November/December (weather permitting) when wildlife activity is low.

Willow and alder must be controlled in the sedge beds to prevent it becoming too invasive and taking over the habitat. Neither is completely unwelcome as they do provide a habitat for birds and water vole and their bark provides food for deer.

### **11.6 The Drainage Ditches**

Linear Park contains 1.5km of permanently wet drainage ditches. For mananement purposes, these are divided into seven sections. All sections are linked by underground culverts. The ditches are of importance as they channel surface water drainage into the Holybrook River and also provide a habitat for the endangered water vole. They contain water all year round.

There are two programmes of ditch management in place:

#### **1. Bankside Vegetation Management**

The bankside vegetation consists of willow and alder, scrub and soft vegetation. This requires removal of fallen tree limbs, cutting back of overgrown vegetation and preventing culverts from becoming blocked. Maintenance operates over a 4 year period, working on a quarter of the ditches each year.

#### **2. De-Silting and Profile Management**

Management involves each ditch section to be de-silted every 12 years. Works should be carried out between October and February. A banksman should be present to watch for public safety and water voles.. A two-staged channel is ideal, narrow at bottom to allow water to flow fast and reduce silt deposition, wider at top to allow passage of flood water. The cross section should incorporate a wetland shelf plus a shallow side, with a steeper side on the opposite bank for water vole burrows. About 6" to 1 foot of silt should be removed.

Silt arisings are left on the banks and levelled off to allow fauna to escape back into the water. By summer the vegetation will have grown through.

In areas of thick in-stream vegetation it will be desirable to replant some on the wetland shelf to improve habitat in the stretches where there is no vegetation.

### **11.7 Balancing Ponds**

The East side of Linear Park (Fords Farm end) contains two privately owned bunded balancing ponds. The purpose of these balancing ponds is to alleviate flooding by retaining excess surface water drainage and dissipating the water slowly. Management of these ponds requires mowing twice a year, clearance of scrub and fly tipping, plus cleaning of trash screens.

### **11.8 Woodland**

The wooded area of Linear Park occupies approximately 5.4Ha. It contains predominantly willow, interspersed with ash, alder, hawthorn, hazel and cherry.

The main walkway through the wooded area was re-surfaced in 2019, after public request. The wood chip surface was replaced with all weather scalplings which will allow the path to be used all year round.

A cobnut grove at the entrance to the woodland walk was created by the Friends group in September 2003. Cobnuts were historically planted in this area of the country and are a cultivated form of the hazelnut.

The trees along the pathways are surveyed every two years for health and safety.

To further improve the tree canopy and diversity of the park, other grassed areas are being planted to trees.

In March 2012, 100 saplings were planted to create a Jubilee Wood in a former meadow (area 6, 11.9) of the park. Donated trees are continually being added to this area to replace dead and damaged ones.

### **Members of the Community at the Jubilee Wood Tree planting March 2012**





## Recent tree planting

As part of their electrification programme, Network Rail has removed any vegetation which falls within seven metres of the outside running rail of the railway. They have undertaken an environmental impact assessment for these works and there is a legal requirement in the relevant legislation that requires NR to provide proportional environmental mitigation where appropriate. The Trust for Oxfordshire's Environment (TOE2) is working with Network Rail as delivery partner for the No Net Loss of Biodiversity on the Greater West Programme. Linear park has been accepted into this project and a three year programme of planting commenced in winter 2019.

1. An area of 0.5Ha boggy meadow located in the SW corner of the park (area 3 Summer meadow areas 11.9) has been planted with 400 native whips, cones and stakes. Volunteers from the Duke of Edinborough Award Scheme and Friends of Linear Park carried out the planting in December 2019. Whips have been donated by BCV and the TOE2 project.
2. Fords Farm in the eastern section of the park. To screen the houses from the gantries resulting from the electrification of the railway, 30 native tree whips were planted complete with stakes and wire rabbit guards.



## The Pump

In October 2014, WBC started work on widening the Bath Road (A4) from the Calcot Hotel to Royal Avenue. This meant one of the old roadside pumps was to be removed. Following a request from the Friends of Linear Park, the Council moved this pump to its current location in the sensory garden. The Friends researched the history of the pump and presented the information at their AGM.

The water pumps were installed along the A4 c. 1832 - their function was to water the road to keep the dust down following complaints from stagecoach companies, drivers and local residents.



## World War 1 Memorials

In summer 2014, to commemorate the start of World War 1, two areas of the park were planted to poppies. The sites were chosen as they gave good views of the poppies from the railway and access to the public.



To commemorate the fallen 21 soldiers from the Parish of Theale (the former name of Holybrook Parish) during the First World War, the Friends of Linear Park in partnership with WBC have planted an avenue of 21 oak trees in Linear Park. This avenue leads into the Jubilee Wood.

### *The Oak Avenue*



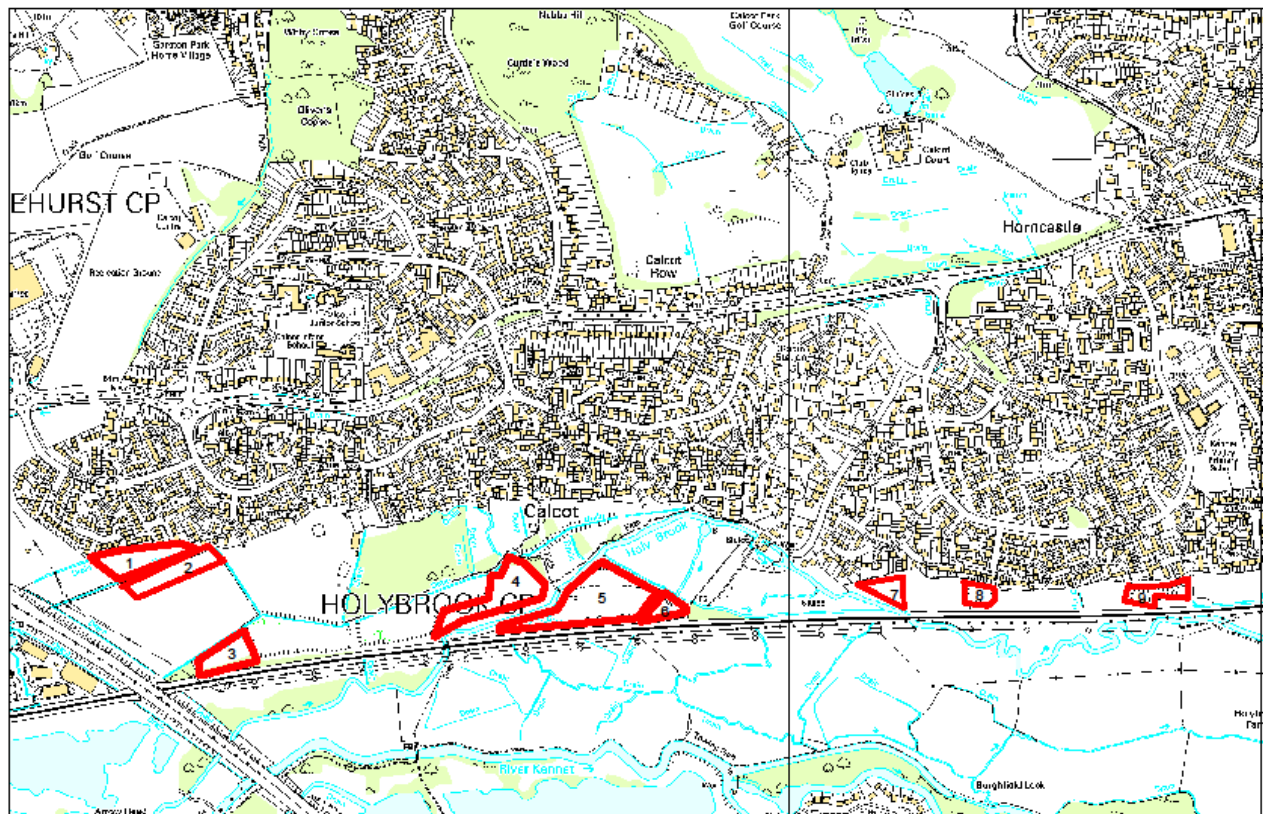
The Parish Council has provided a Commemorative seat which was installed near the oak avenue in 2019.



### **11.9 Summer Meadows**

To improve the diversity of habitats within Linear Park, the grass cutting regime has been reduced in several areas to that of a summer meadow maintenance. Here, the grass is cut once in spring and once in late summer with the arisings removed from site to help reduce fertility. Planting of plugs of native wild flowers has been carried out by the Friends and other volunteer groups. This should attract increased numbers of insects, birds and mammals as well as encouraging more native wild flowers to become established.





Reproduced from Ordnance Survey map with the permission of the Controller of Her Majesty's Stationery Office (c) Crown Copyright 2013, West Berkshire District Council 100024151.

**Area 1** (0.6ha). This appears to contain a lot of spoil dumped many years ago from the housing development. It has a high density of mallow and grass cover is relatively poor. Is a good area to encourage wild flowers. Wild flowers have been planted in this area on an ad-hoc basis since 2005, donated by June Scott of FOLP. Beansheaf pre-school planted wild flowers donated by FOLP in May 2008. Planting of non-native species is avoided. The grass is mown twice a year and pathways are cut 8 times a year. Brush cut some of the mallow before it sets seed as mallow will take over if allowed. This area will be no good for fritillary as they prefer damp conditions.

**Area 2** (0.7ha) The cutting regime was changed from 10 cuts to 2 cuts pa in 2010. Pathway cut 8 times a year.

**Area 3** (0.5ha). Tilehurst to Fobney mains water pipeline installed here 2010 and burrows under the railway line at this point. Suitable for tree planting to help as screen from M4.

**Area 4** (1.3ha) is in the main body of the park to the west of pooh bridge. The cutting regime was changed from 10 cuts to 2 cuts pa in 2007. This area floods frequently and is very lush. Wild flower plugs were planted in this area in 2008. Ideal location for planting fritillary (damp area).

**Area 5** (2.4ha) a triangular area over Poo Bridge between railway and river with a public footpath running through it as well as another regularly used path. Open to recommendations on management but pathways must be mown to keep access open.

**Area 6** (0.3ha) a small triangular area in the corner next to the railway line. Planted to sapling trees in 2012 to create the Jubilee Wood.

**Area 7** (0.4ha) a triangular area adjacent to play area.

**Area 8** (0.2ha) Balancing pond which rarely fills with water

**Area 9** (0.4ha) Balancing pond frequently water filled. Requires cutting and removal of encroaching scrub.

Pathways are nine metres wide, and cut eight times a year. The summer meadow grassland constitutes about 40% of the informal grass areas.

### **11.10 Birds**

Linear Park provides an important habitat for many birds. Carefully managed conservation work ensures that food sources for birds are maintained and nesting sites are provided and protected.

The successful re-introduction of the red kite in this area means that these birds of prey are regularly seen over the park. Members of the Friends Group, West Berkshire Council Officers and local residents monitor and maintain records of all bird life seen in the park. A current list of bird life within the park can be found at Appendix 18.9.

### **11.11 Water Voles**

Linear Park once had a good population of water voles. The Friends group link in with BBOWT (Berks, Bucks & Oxon Wildlife Trust) to monitor the number of water vole sightings in the park as well as carrying out important conservation work to clear the banks of scrub and provide a more suitable habitat for these endangered animals. BBOWT regularly hold training sessions for water vole survey volunteers in the park and in 2010, the park was featured on a Radio Berkshire outside broadcast featuring water voles.

Surveys are carried out annually along the ditches and balancing ponds of the park and results returned to BBOWT. Unfortunately, a decline of water voles has been observed in the park since 2014.

Floats/rafts supporting a basket filled with clay are in place and checked weekly to detect whether there is vole or mink activity and a mink control strategy is in place.

*Float containing clay filled basket to detect footprints*



*Mink footprints on clay filled basket*



Information notices are located on the notice boards in the park to educate the public about the presence of voles, their protected status and what to look out for if they want to see them.

In the past few years the banks of the Holybrook beside Poo Bridge had begun to become eroded by dogs. In order to protect these fragile banks and water vole burrows, fences have been erected complete with a purpose built stepped area for dog access.

In 2012 willow was transplanted here to stabilise the banks and improve the habitat for the water voles.

## 12 Community Involvement

Local community support and the work carried out by the Friends of Linear Park Group is fundamental in the management of Linear Park and in maintaining a well presented, well maintained and accessible open space for all.

The Holybrook Parish Council, the Friends and the local community have been closely involved in this document and will be essential in helping to achieve the aims and aspirations laid out in the action and development plan. In 2005, a questionnaire was sent out to local residents for the creation of the Holybrook Parish Plan. The feedback received helped identify the strengths and weaknesses of Linear Park and has helped create a focused and driven management plan to ensure that Linear Park continues to be a high quality, green, natural space. A further questionnaire was issued in 2011 as part of the refreshed Parish Plan. Unfortunately due to a poor response rate, the refreshed plan has not been issued. Steps are in place to improve the response.

### ***12.1 Holybrook Parish Plan – ‘A vision for now & the next 15 years’***

Through close contact with community groups, the steering group of Holybrook Parish Council highlighted six key concerns within the parish, one of which being the protection and improvement of Linear Park, focusing on resolving the problem of litter and dog fouling within the park and improving recycling facilities.

Questionnaires were sent out to local residents to find out their concerns and opinions on services, facilities and opportunities within the Parish. 700 completed questionnaires were returned (27%) from across the parish. From these questionnaires, the most common concerns mentioned were:

- The need for a greater police presence
- Taking action against litter droppers
- Prevention of dog fouling
- More facilities for teenagers and young people

The steering group decided to divide into separate teams with each team concentrating on tackling the issues raised by responses from the questionnaire. These areas were Amenities, Personal Safety, Environment, Road Safety, Transport and Youth Activities.

The feedback from the questionnaire was useful in creating a picture of how the local community views Linear Park.

26% of respondents didn't know where the park was.

90% of park users wanted to turn the park into a nature reserve

Anti-social behaviour within the parish was a major problem for local residents.

Responses from the questionnaires showed that:

23% of residents have been affected by litter

23% of residents have been affected by vandalism

19% of residents have been affected by theft

19% of residents have been affected by dog fouling

11% of residents have been affected by graffiti

3% have been affected by drugs

24% of residents want a greater police presence  
18% of residents want more CCTV coverage  
18% of residents would like more consultation between police and local people  
12% of residents want more community activities  
10% of residents want improved street lighting  
10% of residents requested more drink/drug education/prevention  
8% of residents want to see a wider use of neighbourhood watch

*Please note these percentages are parish wide and include Linear Park but are not confined to Linear Park.*

Encouragingly, 77% of residents said that they feel safe in the park.

Results from the questionnaires showed that most advertising for the park is seen in local and free press.

## **12.2 The Friends of Linear Park**

“Promoting, enhancing and protecting the park and its wildlife”

The Friends of Linear Park are a very active volunteer group within Linear Park, helping to preserve the wildlife of the area, encourage community enjoyment and carry out essential maintenance in the park. The group works closely with West Berkshire Council to ensure Linear Park is well maintained, clean and accessible.

The group began in 2003 following a successful ‘Picnic in the Park’ celebration for the Queen’s Jubilee in 2002. The first project undertaken by the Friends group was the planting of an avenue of cobnut trees, helped by local residents and a local scout group. The Group holds a meeting every 6 weeks and an AGM where a guest speaker is invited.

The group is made up of local residents with an interest in the park, members of the Parish Council and Caroline Booth, Grounds Maintenance Officer at West Berkshire Council. The Friend’s activities are reported via their own page on the Holybrook PC website, articles in the bi-monthly parish newsletter, social media and posters on the park notice boards.

The FOLP task group meet every Tuesday for maintenance activities, eg

1. Mowing the grass in community garden and around fitness equipment.
2. Trimming the hedge surrounding the garden. Digging, forking of flower beds and herbaceous borders
3. Maintenance of newly planted whips eg clipping the vegetation surrounding whips, replacing broken plastic guards and bamboo canes
4. Clearing of leaves and debris off the footpaths.
5. Cutting back overhanging vegetation along pathways.
6. Reclaiming the full widths of pathways by removing “edge creep”.
7. Immediate response of making safe any fallen branches following high winds etc until the contractors can attend
8. Painting park furniture
9. Keeping trash screens clear of debris
10. Litter picking and fly tipping clearance.
11. Assisting with water vole surveys and mink monitoring.
12. Reporting issues to WBC.





*Friends  
bench and  
barrier  
painting*



In addition, The Friends of Linear Park :

1. Work with BBOWT to monitor the wildlife including the water vole populations
2. Work with other volunteer groups such as Reading Outdoor Group and The Duke of Edinburgh Award Scheme to carry out tree or bulb planting or willow management.
3. Work with The Police helping to increase the security of the park.
4. Consult with local residents and feed back issues and suggestions about the park to the Council.
5. They help promote interest groups and organise social outings.
6. Encourage the local community to make more use of Linear Park by organising community fun days and activity days within the park.
7. They act as a pressure group to protect the park from development.
8. Apply for grants and fund raise for equipment and projects such as building the sensory garden.
9. Apply for donations of trees, plants and bulbs to plant in the park.



*Friends working on the woodland walk path*

In 2018, FOLP celebrated their 15<sup>th</sup> anniversary and held a fun afternoon on St Filbert's Day, August 20<sup>th</sup>. This date was chosen as the hazel nut harvest traditionally began on this day and the Linear Park area of Calcot was known for growing cobnuts.

Nut themed games, quizzes and treasure hunt all took place, and also the raising of the Green Flag.



### Key Achievements of the Friends Group to Date:

- Increasing community involvement in the park from young to old and encouraging local residents to take an interest in the wildlife around them.
- Working with local groups such as the WI, Beavers, Guides, pre-school groups and youth workers to make the park accessible for all.
- Planting 100s of trees after successful grant applications.
- Recreating a cobnut tree walkway (plants which used to provide nuts for chocolate bars made locally).
- Leading the campaign to lay a network of all-weather paths through the park.
- Construction of a Community Garden.
- Winning the 2013 Volunteers of the Year Award at the West Berkshire Council Recognition Awards
- Commissioning the first sculpture in Linear Park – a carved duck with seats installed in the Sensory Garden October 2013.
- Devising and promoting the memorial seating scheme
- Fund raising and commissioning a Trim Trail installed in 2018
- Setting up the Measured Mile walking route
- Setting up a social work party, meeting once a week to carry out maintenance jobs
- Winning funding from Parish Council CIL monies in 2019 to improve pathways, create picnic areas and install cycle racks at all play areas in the park.

**For more information about the Friends of Linear Park and to join, please contact**

[folpcalcot@gmail.com](mailto:folpcalcot@gmail.com) or

Holybrook Parish Council 0118 945 4339 or visit the Parish Council website for links to the Friends Group.

[https://www.holybrook-pc.gov.uk/Friends\\_of\\_Linear\\_Park\\_25957.aspx](https://www.holybrook-pc.gov.uk/Friends_of_Linear_Park_25957.aspx)

The Parish Council also supports the Friends Group by providing insurance, function rooms, giving links to the web site and passing on information in any direction.

Activities are advertised in the park notice boards, on the web site and by email.



*Unveiling of the new memorial sculpture seat in the sensory garden Oct 2013*

### **12.3 Community Events**

Linear Park is at the heart of Holybrook's community. The park is where people meet, exercise, relax and socialise. The Parish Council and the Friends Group organise family events such as fun days which help promote the park and encourage local residents to become more active in caring for their park.

The Holybrook Festival. The first Holybrook Festival took place in 2008 and has continued every year on the third Saturday in June. Organised by the Holybrook Festival Committee, a steering group made up from the Parish Council, local residents and business partners, it is held on the football field and within the Community Centre. The day is free to attend and offers families and residents the chance to have-a-go at sports, bring and buy stalls, refreshments, live music, dog show and demonstrations from local school children and interest groups.



Throughout the year Linear Park is used free of charge to host small family events such as fun days and children's parties.

Also larger events are held by community groups who use the Community Centre and the park together for sports fun days and barbeques.

In 2020 Holybrook Parish Council is hosting a VE celebration day in the park on Friday 8 May.

Linear Park hosts two junior football tournaments lasting three to four days each in June and July. They are run by local teams Eldon Celtic FC and the Tilehurst Panthers.



**ELDON CELTIC FOOTBALL CLUB**  
2001

**ELDON EVENTS CUP**  
4th & 5th July 2020


**SUMMER TOURNAMENT 2020**

**SATURDAY 4th JULY 2020** U10, U13 & U14 (AM), U7 & U11 (PM)


**SUNDAY 5th JULY 2020** U8 & U12 AM, U6, U9 & U15 (PM)

**All details for applications open on 1st February 2020**

[www.eldonevents.com](http://www.eldonevents.com) Eldon Celtic JFC Registered Charity: 1130441



**TILEHURST PANTHERS**  
TILEHURST PANTHERS FOOTBALL CLUB



**TILEHURST PANTHERS TOURNAMENT**

**Girls Only Football Tournament**  
6th & 7th June 2020

Tilehurst Panthers are holding their annual football tournament on Sat 6th & Sun 7th June 2020.

**130+ teams entered last year!**

This FA sanctioned tournament is a **GIRLS ONLY** football event which will be held at:

**Beansheaf Community Centre,**  
Linear Park,  
Charrington Rd,  
Calcot,  
Reading  
RG31 7AW

## Holybrook Festival

Write up from the Holybrook Festival 2019 - a family fun fair held annually and organised by collaboration between Holybrook Parish Council, local residents including the Friends Group and local business partners. These fun days are part of the Parish Plan Project which aims to encourage more local residents to gain respect and pride for their local surroundings and facilities.

# **Holybrook Festival 2019**

Thank you for attending the Festival this year, which we believe was one of the busiest so far. It seems that everyone had a fantastic time enjoying the free and paid entertainments, along with the BBQ and refreshments, including the well established Beer Tent and Ice Cream Van.

We would like to thank everyone involved who gave their time and enthusiasm, especially our residents who helped on the Festival Committee and on the day.

**Next year's Festival will be on  
Sunday 28th June 2020.**

***Painting in Linear Park***

A local group of artists spent two mornings painting views around Linear Park. Some of their work is shown below:



## **12.4 The Beansheaf Centre**

The Beansheaf Centre was opened in 1993. Set within Linear Park it acts as the focal point for community events and group meetings and also helps attract local residents into the park. The Beansheaf Centre houses the Parish Council as well as many interest groups. The building is an essential part of the local community and the decision to position the Centre in Linear Park demonstrates the importance of this green space for residents.



The Centre offers the local community 3 rooms which can be hired:

**Linear Hall** – for up to 180 people

**The Beansheaf Room** – for up to 80 people

**The Keep** – for up to 35 people

For all room hire enquiries and for hourly prices, please contact the Parish Office. Further details can be found on the Parish website

[https://www.holybrook-pc.gov.uk/Hall\\_Hire\\_25955.aspx](https://www.holybrook-pc.gov.uk/Hall_Hire_25955.aspx)

### ***Community Activities in the Beansheaf Centre:***

There is an interest group for everyone and something suitable for all ages. Youth groups and exercise groups are also able to make use of the park during meetings.

User Groups include:

- Beansheaf Pre-school
- Yoga , Pilates, Zumba, Self Defence, Joggers, Walk for Health
- Reading and District Dog Training Club
- Saturday Morning Orchestra
- 1<sup>st</sup> Calcot Guides
- Women's Institute
- Scrabble
- Support Groups
- Beavers
- Theatre and Dance

## **12.5 The Garage**

The Garage, converted from a former equipment store, is situated behind the Beansheaf Centre. It is equipped with kitchen facilities and a meeting space.

In 2012 the management of The Garage transferred from West Berkshire Youth Services to the Parish Council.



### **Holybrook Community Youth Club 24/7 Project**

To enable disabled access to The Garage facility, the paved pathway and railings were extended from the pavilion to around the side of the Garage. A porch/ canopy was constructed over the Garage entrance and the grass banks surrounding the Garage were re-graded to create a natural seating-cum-amphi-theatre area. In 2013 this project was completed. Funding was provided by: The Greenham Common Trust, Holybrook Parish Council, The Eastern Area Vision, Dr Ellerton's Charitable Trust, West Berkshire District Council's Members' Bid and Creating Capacity Fund.



There is now current interest to turn the Garage into a community café and feasibility studies are being carried out to look into this.

### **12.6 Working with the Community**

Park management and the Friends Group work regularly with local schools, volunteer groups and young people's groups to get the local community more involved in their park.

In 2010, children from Beansheaf pre-school helped plant crocus bulbs in the sensory garden as part of the Big Bulb Plant organised by Pangbourne Rotary Club. When the purple crocus emerged, the Pre School held a fund raising day in aid of Polio awareness – Purple Pinkies. When children have been inoculated against Polio, their fingers are dipped in purple dye to show they are now protected.

West Berkshire Council is working closely with Holybrook Parish Council and the Friends of Linear Park on several community projects to provide facilities for all:

- The Community Garden – work began in 2008 on creating a garden outside the Beansheaf Centre and within Linear Park, led by the Friends group and involving V Reading, the probation service and local schools.
- Beansheaf Pre-school Outdoor Classroom – construction of the secure outdoor area within Linear Park for the pre-school to use for play was completed in 2009. This encourages the young people to play outdoors daily, be aware of the nature around them and to enjoy Linear Park.

- Skate/BMX park project – In 2009, Caroline Booth (Grounds Maintenance Officer) was approached by several young people who were keen on the construction of a BMX/Skate Park in the park. The Neighbourhood Wardens and PCSOs also knew of young people interested in such a project. All the names were collated together and West Berks Youth Service, under Mary Anne Thomas, worked with these young people to discuss their requirements. Holybrook Parish Council pledged £25,000 and West Berks Council expressed an interest for £50,000 from the Playbuilder Scheme. The bids were successful and construction of the skate park was completed in March 2011.
- Trim Trail – In 2015, in response to several requests, The Friends of Linear Park carried out a survey to gauge interest in outdoor fitness equipment. Along with interest from a local running group which meets regularly in Linear Park and an endorsement by West Berks Public Health and Wellbeing Department, The Friends of Linear Park have raised the funds for this project and sourced equipment. The Trim Trail was installed in Spring 2018.
- In November 2007 a major survey was carried out by West Berkshire Council's Youth Service to find out what young people think about their local community and the services on offer. In the survey covering Holybrook, there were over 100 respondents. 36.1% of young people think parks and green spaces make their area a good place to live, 22.8% of young people think there should be more parks and green spaces and 10.1% of young people would like to get involved in volunteering opportunities.

## 13 Marketing

### 13.1 Marketing Strategy

Aims of the Marketing Strategy:

- Interpret the Park and its facilities for the public
- Develop a cohesive marketing approach for the park
- Continue to provide a diverse range of events and activities

Linear Park is marketed through the following media:

#### **Park Information Boards**

Park information boards were installed in spring 2008. There are currently four signs; at the main car park by the Beansheaf Centre, at Pooh bridge, at Albury Gardens and at the entrance from Mill Lane (See park map Page 6). Each board has a map of the park. The board also contains details on who manages and owns the park, information on the Friends of Linear Park, information about the park's facilities, a brief history and information on the wildlife of the park. The boards also contain contact information for the Council's Customer services team should members of the public want further information or have a complaint. This includes an out of hours telephone number.

The boards also have a lockable lower section where information on events, Friends conservation tasks and any local news is advertised. The notice boards allow park management to further promote the park to regular users and new visitors. They increase the initial welcome to the park and establish better communication between park management and park users.

#### **Website**

Holybrook Parish Council has its own website which is an important resource in marketing and promoting Linear Park.

The website can be found at

<http://www.holybrookparishcouncil.co.uk/Holybrook-pc/Default.aspx>

or by typing 'Linear Park' into the *google* search engine.

To further maximise the use of the internet as a marketing tool, West Berkshire Council has created a web page for Linear Park on the Parks section of the Council web page [www.westberks.gov.uk](http://www.westberks.gov.uk) (*enter 'Linear Park' into the search engine*).

This contains maps and transport links to the park and access to the park management plan.

#### **Linear Park Leaflet**

Park leaflets are useful ways of advertising and can be distributed around Council offices, Tourist Information Centres, libraries and museums. The Friends of Linear Park in conjunction with The Parish Council currently produces a leaflet on Linear Park available from the Parish offices. It contains information about the park's history and wildlife. West Berkshire Council does not yet have a park leaflet. Park management will look into

producing a park leaflet which will contain information, colourful images, rules of use and list of facilities to compliment the leaflets produced by FOLP/Parish Council.

### **Events Marketing**

The Parish Council, West Berkshire Council and the Friends group actively organise a programme of family events in Linear Park: The Holybrook Festival, health walks and Friends conservation activities.

Events are organised through collaboration between Holybrook Parish Council, Friends of Linear Park and West Berkshire Council's Parks Team. Events are advertised through the production and distribution of flyers and posters. These are positioned in the park, in the Beansheaf Centre, in local businesses and on the Linear Park website. Further afield these flyers/posters are available in Council offices, libraries, schools, TIC and Nature Discovery Centre in Thatcham (which attracts around 50,000 visitors per year).

Events information is sent to a mailing list of local residents and mail shots are carried out by the Friends groups to advertise events.

### **The Friends of Linear Park**

Regular conservation tasks are advertised on posters throughout the park. Information about the group can be found on the park notice boards and on the Parish Council website. Information can also be obtained through the PC office which is situated in the Beansheaf Centre and is open Monday - Friday 10am-1pm. The Friends take part in all events, helping to run activities, operate stalls and prepare food. They advertise their group at all community events.

The Friends Group actively applies for grants and funding in order to raise funds for work in the park. This raises the profile of Linear Park and attracts a wider ranging interest in the area.

The Friends have received a grant from the Parish Council to fund their own insurance so that they are able to hold events and activities independently of West Berkshire Council.

### **Sport in Linear Park**

8 local football teams currently use the 4 pitches at Linear Park for weekend football matches. Teams comprise of boys and girls, juniors, youths and adults.

Regular health walks are held in the park and these are advertised through a walking newsletter produced by the Walking Coordinator.

### **Holybrook Parish Council Newsletter**

The Parish Council produces a regular community newsletter every other month, which contains news and information about all local issues and events, including details of all events being held at Linear Park, news from the Friends of Linear Park and any news about the park. See Appendix 18.14.

## Green Flag Award Scheme

The Green Flag Award scheme is the national standard for parks in England and Wales. The award scheme was designed to create a benchmark of excellence in recreational green spaces. See Appendix 18.1 for the Green Flag criteria.

Linear Park is an important green space for the residents of Calcot. The park achieves high standards of cleanliness, safety and security and provides a haven for wildlife including nationally endangered species such as the water vole. The park is supported by the invaluable work carried out by the Friends of the park group and is an area used to promote community spirit. After successfully achieving its first Green Flag award in 2009, the park's management team has continued each successive year to achieve this award. This further promotes the park and allows it to provide a much needed and desired community resource.



## **14 Management**

### **14.1 Vision Statement for Linear Park**

Our vision for Linear Park is to provide a safe, secure and attractive green space for all park users to enjoy and to ensure that the park is well managed in an environmentally sensitive and sustainable way.

This will be achieved by:

1. Striving to create and maintain a welcoming place for all park users
2. Establishing a safe and secure place
3. Using our parks and green spaces to encourage a healthy lifestyle and promote well being
4. Maintaining high standards of cleanliness in our parks
5. Using environmentally sound management practices
6. Promoting conservation and heritage interest in the parks
7. Encouraging community involvement
8. Promoting the park through marketing

### **14.2 Management Strategy**

This management plan has been produced through consultation with a wide range of users and facilitators of the park. The plan aims to ensure that a coordinated partnership is developed between the Council and all key stakeholders to ensure the long term future of the park. It is a constantly evolving document, addressing the changing needs of the park users and facilitators. The plan focuses on a number of realistic and deliverable targets and enables park policies to be introduced. These targets and policies will be reviewed and updated annually.

The plan is also a means of securing additional investment and allocation of resources to contribute to the improvements within the parks.

In managing Linear Park, it is important to ensure that the unique features within the park are recognised and their value for local people and visitors is developed through appropriate management.

#### **Management Strategy Objectives:**

- To implement the objectives identified within each section of this management plan
- To monitor and review the effectiveness of the objectives in the management plan for Linear Park.
- To ensure that sufficient resources are allocated to deliver the objectives within the plan
- To ensure the priorities for investment are balanced against local need and aspirations
- To demonstrate the contribution that Linear Park makes towards West Berkshire's wider strategic aims
- To meet park management operations targets

### **14.3 Financial Strategy**

In January 2018, the grounds maintenance contract was re-tendered. The contract was awarded to a new company, Continental landscapes Ltd, for five years to include a five year extension. Following the re-tender, the current routine annual maintenance cost for Linear Park is £55,036.87 (see Appendix 18.5). Revenue budgets are set every February for the following financial year (April to March).

Local Area Agreement funding enabled the Council to appoint a Countryside Access Officer who has assisted the Parks Management Team in taking the parks up to the Green Flag Award standard. In 2004, West Berkshire Council adopted supplementary planning guidance SPG 04/04, 'Delivering Investment from Sustainable Growth', Topic Paper 7 – Open Space. Some of the improvements carried out in the parks have been funded from this external stream as a result of new development in Calcot. The policy and topic paper may be viewed on the Council's website.

## 15 Where do we want to get to?

### SWOT Analysis

The following table of strengths, weaknesses, opportunities and threats have come through consultation with key stakeholders in Linear Park, Holybrook Parish Council, West Berkshire Council, members from the Friends group and local residents. They have helped create a vision for the park and the priorities in our action plan.

Strengths	Weaknesses
<ul style="list-style-type: none"> <li>● <b>Presence in the park</b></li> <li>● Offices to Holybrook Parish Council</li> <li>● Active, community led Friends group</li> <li>● NAG &amp; Neighbourhood Warden Scheme</li> <li>● Regular visits by grounds maintenance officers and contractors</li> <li>● <b>Building facilities and infrastructure</b></li> <li>● Community Centre</li> <li>● Sports changing facilities</li> <li>● Youth club specific building</li> <li>● Gated and secure main access</li> <li>● Benches and seats</li> <li>● <b>Access</b></li> <li>● Signage at main access point to park</li> <li>● 54 bay car park with disabled bays</li> <li>● 28 Pedestrian access points               <ul style="list-style-type: none"> <li>▪ Easy access, all weather pathways</li> <li>▪ Gated accesses to improve security</li> </ul> </li> <li>▪ <b>Sports/Activity provision</b></li> <li>▪ Four sports pitches, basketball court</li> <li>▪ 5 Children's Playgrounds</li> <li>▪ Skate Park</li> <li>▪ Walking For Health scheme</li> <li>▪ Regular fun days &amp; other events held in park</li> <li>▪ Excellent for dog walking</li> <li>▪ <b>Community Conservation Activities</b></li> <li>▪ Community Garden</li> <li>▪ Tree planting</li> <li>▪ Scrub bashing</li> <li>▪ Litter picking</li> <li>▪ Path creation and maintenance</li> <li>▪ Wildlife monitoring, surveying and habitat maintenance</li> <li>▪ <b>Diversity of Natural features</b></li> <li>▪ River basin</li> <li>▪ Grassland/flood plain</li> <li>▪ Wetland ponds</li> <li>▪ Ditches</li> <li>▪ Woodland</li> <li>▪ <b>Maintenance</b></li> <li>▪ Playgrounds routinely inspected and maintained to high standard. 10 yr plan to</li> </ul>	<ul style="list-style-type: none"> <li>▪ <b>Marketing</b></li> <li>▪ Greater marketing required</li> <li>▪ A park leaflet is required</li> <li>▪ <b>Activities</b></li> <li>▪ Need to encourage more cycling</li> <li>▪ Need to encourage more running</li> <li>▪ *Need to encourage keep fit</li> <li>▪ *Lack of diverse activities for young people at eastern end of park</li> <li>▪ *Playground for adults (outdoor gym)</li> <li>▪ <b>Access</b></li> <li>▪ Some pathways could be better surfaced to improve access for wheelchair users and parents with buggies</li> <li>▪ Better surface to prevent puddling</li> <li>▪ Need to provide a mix of seating with and without arms</li> <li>▪ *Some access points look tired and uneven and need refurbishing</li> <li>▪ <b>Conservation</b></li> <li>▪ Further tree planting and wild flower/bulb planting required to improve diversity, screen motorway and railway, provide natural corridors and improve aesthetic value of park, particularly in the east end</li> <li>▪ No actual guided nature trails</li> <li>▪ No interpretation boards to explain the vast array of features</li> </ul> <p style="text-align: center;"><b>*being addressed</b></p>



<p>upgrade.</p> <ul style="list-style-type: none"> <li>▪ Regular litter picking &amp; emptying of dog bins/litter bins</li> <li>▪ Trees well maintained &amp; regularly assessed</li> </ul>	
---	--

<p><b>Opportunities</b></p> <ul style="list-style-type: none"> <li>▪ Use Green flag status to further promote the park</li> <li>▪ Use Friends Group who have specialist members eg cyclists and fitness, media experts, wildlife experts, gardening experts. Fund raising and grant application experts.</li> <li>▪ Endorse new facilities with Police support</li> <li>▪ Training available to establish more walk leaders</li> <li>▪ Work with the Parish Council to create park leaflet and promote the park on web sites.</li> <li>▪ Use employees from private industry to carry out conservation tasks.</li> <li>▪ Work with Community Payback schemes to carry out work in the park.</li> <li>▪ Sponsored Memorial seating scheme.</li> </ul>	<p><b>Threats</b></p> <ul style="list-style-type: none"> <li>▪ S106 vs CIL constraints</li> <li>▪ Resource constraints (officer time, budgets)</li> <li>▪ Illegal motorbike access in park</li> <li>▪ Resident concerns over perceived anti-social behaviour caused by large gatherings of youths (noise, alcohol, vandalism of resident's property)</li> <li>▪ Vandalism and general wear and tear of infrastructure (keeping it safe)</li> </ul>
--	--

## 16 How Will We Get There?

### 16.1 Action and Development Plan for 2021-2025

Improvement	Project	Respons- ibility	Resource	Time scale	Progress
<b>1. Welcoming and Accessible</b>	<b>Waymarker signs near access points</b> Consider installing additional signage at other access points to park eg Burghfield Rd, Burbidge Close, Albury Gardens, Dorking Way	WBC	c.500k per finger post	21-25	
	<b>Equality and Diversity assessment of park</b> Commission survey of the park to identify where access and facilities can be improved to create a more welcoming and accessible park	WBC	Internal Officer	21	
	<b>Woodland path</b> Investigate improving surface by adding fine gravel to dust.	WBC/ FOLP	£60 per tonne bag	21	
	<b>Existing all weather paths through park</b> Survey condition of paths. Where necessary, resurface key paths with fine top dressing to enable wheelchair & pushchair access. Remove surface creep to widen paths for social distancing. Repair muddied, flooded paths.	FOLP/ WBC	Council revenue budget. Volunteer labour.	21-23	Ongoing.

Improvement	Project	Responsibility	Resource	Time scale	Progress
	<p><b>All weater paths additions</b>  Further paths requested, to be 2m wide</p> <ul style="list-style-type: none"> <li>a) Dorking Way to Beansheaf (555m)</li> <li>b) Cow Lane to Palmera Ave (65m)</li> <li>c) Pooh Bridge to Railway Crossing (PROW Hol4) (275m)</li> <li>d) Pooh Bridge westwards along north side of river and railway (791m)</li> <li>e) Calcot Mill to Jubilee Wood (PROW Hol4) (154m)</li> <li>f) Wooland walk Willow Tree Glade to Balancing Pond (130m)</li> </ul>	WBC/ FOLP	CIL monies?  c. £36.50 per 1x2m length of path. Total £60k	21-25	Phased approach. Path e) highest priority
	<p><b>Access points</b>  Upgrade access points to allow mobility scooters / RADAR key operation through kissing gates</p>	WBC	c.£1000 per gate	21-25	Phased approach
	<p><b>Access Points</b>  Upgrade surfaces to level off and clear mud.</p>	WBC/ FOLP	c.£250 per surface	21-25	Phased approach
	<p><b>Gateway to the park</b>  Formalise bank adjacent to overflow car park at Beansheaf Community Centre to create a more aesthetically inviting entrance</p>	WBC/ HPC FOLP	HPC funding/FOLP labour	21-22	Five ornamental trees to be planted Feb 21. Community Christmas tree also to be planted.
	<p><b>Seating</b>  Sponsored memorial bench scheme to improve the seating capacity in the park.</p>	FOLP/ WBC	£500 donation for bench c£500 installation with wearpad	21-25	

Improvement	Project	Responsibility	Resource	Time scale	Progress
	<b>Seating</b> Investigate locations for simple timber benches	FOLP /WBC	£50 per bench materials	21/25	
	<b>Seating</b> Install wear pads beneath new and existing benches	CB	c £50-100	21-25	Survey existing benches and arrange wear pads on phased basis
	<b>Increased access points into park</b> Consider additional access from Underwood Rd/Grantham Road	WBC/ FOLP		21-25	
	<b>Green access route between Beansheaf and Fords Farm</b> Consider a green route between the two sections of park	WBC/ FOLP /HPC		21-25	
<b>2. Healthy, Safe and Secure</b>	<b>Visual and Physical Presence</b> Work with Friends Group and local police forces to ensure the park is regularly patrolled	WBC FOLP TVP HPC AW	No cost	21-25	Ongoing
	<b>NAG</b> Attend 6-weekly Neighbourhood Action Group meetings for Holybrook Parish	CB TVP HPC FOLP	No Cost	21-25	Ongoing

Improvement	Project	Responsibility	Resource	Time scale	Progress
	<b>Risk management inspections</b> Identify, record and risk assess all infrastructure within park. Undertake regular inspections and record findings. Implement repairs as appropriate. Develop software to record findings.	WBC	Time resource	21-25	Ongoing
	<b>Measured Mile</b> Identify a circular walk of exactly a mile to encourage keep fit	FOLP	No cost	21	
	<b>Tree Safety</b> Carry out tree surveys every 2 years & implement recommendations. Use ARBORTRAK software to keep records.	WBC	Tree survey c.£1800	21-25	Survey due 21
	<b>Dogs</b> Develop links with dog warden to prevent dog fouling occurring within the park.	WBC HPC AW	No cost	21-25	Ongoing.
	<b>Dog bins</b> ID all park dog bins with a unique reference number and record location on GIS to make public reporting of bin issues simpler.	WBC	No cost	21	
	<b>Dogs</b> Maintain sponsored dog bag dispenser stations at various points around the park. Partake in station ID project to make reporting of issues simpler.	WBC/ ECG	No Cost	21-25	Ongoing
	<b>Unsolicited access</b> Improve access points where appropriate to prevent illegal motorbike access (RADAR operation)	WBC	Council revenue budget	21-25	Ongoing rolling programme of improvements.

Improvement	Project	Responsibility	Resource	Time scale	Progress
	<p><b>Car park locking at night</b>            Arrange for car park to be locked at definite times to reduce confusion            Appoint a security company to operate out of hours to release cars that become locked in.            Install appropriate signage.</p>	WBC	Council revenue budget	21	Locking times agreed Security company appointed Signs to be completed
3. Conservation and Heritage	<p><b>Environmental Strategy Plan</b>            Re-wilding of areas in Linear park            Commission Species survey            Identify areas to re-wild</p>	WBC		21-25	21 Species survey
	<p><b>Wildlife habitat improvement</b>            Conservation work to preserve and &amp; improve habitat for wildlife, including endangered water voles</p>	WBC/ FOLP	No cost	21-25	Work carried out by volunteers
	<p><b>Ditch desilting/flood prevention</b>            Establish 6 year desilting/profile reshaping programme (1 ditch per year) followed by 12 year programme thereafter</p>	WBC/	Council revenue budget c.2k p.a	21-25	Commenced Winter 2012 with Ditch 1&7 Ditch 2 completed 2013 Ditch 3 and 5 completed 2014 Ditch 4 and 6 completed 2015/16 Ditch 1 carried out Feb 20 Ditch 7 due 21
	<p><b>Wildlife habitat improvement/flood prevention</b>            Establish rolling 4 yr programme of management of banksides of ditches.            Pollard scrub and clear bankside</p>	WBC	Council revenue budget £500 p.a	21-25	Work commenced by contractors in 2010. Ongoing

Improvement	Project	Responsibility	Resource	Time scale	Progress
	vegetation.				
	<b>Wildlife habitat improvement/flood prevention</b> Excavate build up of plant material and sludge from balancing ponds	WBC	Council revenue budget, capital budget c.2000k p.a.	21-25	Devise a programme to remove eg 1/8 material each year. Consider where to leave arisings. Still in debate.
	<b>Wildlife habitat improvement/flood prevention</b> 4 year rotation to cut and clear ¼ of sedge from each pond each year	WBC	c.2000k p.a.	21-25	Rolling programme. 1/4 completed in 2010. 1/8 completed Mar 2015. ¼ completed Oct 2016. ¼ completed Oct 2018.
	<b>Wildlife habitat improvement/flood prevention</b> 3 year programme to remove trees and kill off stumps to prevent regrowth	WBC	c. 6000k p.a.	21-25	Rolling programme 1/3 completed in Nov 2016 1/3 completed in Jan 2018
	<b>Planting of wild flowers</b> (only native wild flowers) Make sample strips with scrapes and investigate pre-sown mats.	FOLP	c. £500	21-25 21-25	Flowers donated by local residents, planting carried out by FOLP. Ongoing. wild flowers planted by Beavers 2015
	<b>Naming of particular areas of the park</b> Identify areas eg the Garden, the Jubilee Woods. Decide of appropriate names Investigate signage material	FOLP	volunteers	21-25	21 commence
	<b>WW1 Memorials</b> Tree planting - plant 21 trees in memory of fallen soldiers from the Parish	FOLP	Council revenue budget	21-25	Planted in spring 2015. Three replacements planted Jan 2017. Check health of trees.
	<b>Water voles</b> Continue to survey, monitor and protect water voles in park	JS CB BBOW T	No cost	21-25	Judy's volunteers for BBOWT collating sightings etc
	<b>Wildlife monitoring</b>	FOLP	No cost	21-25	FOLP continue to monitor & record

Improvement	Project	Responsibility	Resource	Time scale	Progress
	Continue to record wildlife sightings in the park				wildlife seen in park, will look for volunteers with knowledge of insects etc - Cathy and Derek McEwan
	<b>Nature Trail</b> Consider a marked nature trail with information boards at each point of interest detailing feature and conservation actions.	WBC FOLP	Cost out price of information notices and way markers c.2k each	21-25	Devise a suitable route. Tie in with circular walk and all weather pathway for wheelchair access.
	<b>Non-native vegetation</b> Identify non-native vegetation, eg Japanese knotweed, Himalayan Balsam, garden escapes. Survey park vegetation and remove/control all notifiable plants and vegetation not required. Check for garden encroachment of neighbouring properties and resolve.	WBC FOLP	Council revenue budget/volunteers	21-25	Ongoing as budgets and hazard dictate
<b>4. Infrastructure &amp; Other Facilities</b>	<b>Outdoor Gym</b> Investigate integration of outdoor gym equipment with new play area/MUSA at Albury Gardens	WBC	Capital funding	22	Tender in 22 to companies
	<b>Timber Care</b> Develop a programme of painting & timber treatment for fixtures & fittings	FOLP	Work carried out by volunteers	21-25	ongoing
	<b>Railings</b> Replace/repaint iron rails and gates around park	FOLP	Council revenue budget for paint c£100	21-25	Part of rolling programme of improvements.



Improvement	Project	Responsibility	Resource	Time scale	Progress
	<b>Trim Trail</b> Consider extending trim trail from Fords Farm into Beansheaf, to improve facilities and encourage other types of activity	FOLP	Capital funding/ Grant	21-25	9 items Installed in Fords Farm Spring 2018.
	<b>Pump Track</b> Consider soil Pump track either at Fords Farm or Beansheaf to encourage more cycling in the park and improve facilities	WBC	Capital	21-25	Consultation
	<b>Bulb/Tree planting</b> Consider planting bulbs/trees at Fords Farm to enhance the area	FOLP	Grants/funding	21-25	Network rail trees available from mitigation of electrification 2016 onwards
	<b>Cycle Hub</b> Set up a cycle hub to encourage bicycle use and maintenance. Tie in with pump track. A building is required which can also be used as a shared storage facility for FOLP, HPC, Pre-school.	WBC	Capital	21-25	Funding required
	<b>Community Garden</b> Continue to maintain and develop the community garden outside the Beansheaf centre.	FOLP	Project funded by money raised by FOLP	21-25	All work carried out by volunteers & coordinated by FOLP. Ongoing project. Willow tunnel constructed 2011.
	<b>Storage Facility</b> Identify location and structure of facility for use by FOLP, Holybrook Festival, Pre-school. Also used at Cycle Hub.	WBC/ FOLP /HPC	Capital	21-25	
	<b>Community Café/Snack bar</b> Convert existing "Garage" which is currently used for storage into a community run café.	WBC/ HPC	Capital/Grants	21-25	

Improvement	Project	Responsibility	Resource	Time scale	Progress
<b>5. Resource Conservation , Resource Management &amp; Recycling</b>	<b>Sustainability</b> Work with partners to ensure adequate disposal & storage of rubbish on site	WBC CL HPC	No cost – done in house	21-25	Ongoing
	<b>Sustainability</b> Promote sustainable awareness amongst staff & contractors	WBC	No cost – done in house	21-25	Ongoing
	<b>Sustainability</b> Clearance of willow/alder from beds Arisings chipped and spread on pathways or as mulch or used for hurdles	FOLP	No cost	21-25	Work carried out by FOLP & other volunteers, 1-2 days per year voluntary work required. This is now too much work for volunteers so contractors used instead.
	<b>Wildlife habitat improvement</b> Store some arisings from sedge beds and grass meadows on compost heap in park. Less transport miles.	WBC	£1500 annual Council revenue budget	21-25	Ongoing
	<b>Waste management</b> Promote waste minimisation on Council sites by keeping minimal number of litter bins.	WBC	No cost – done in house	21-25	Ongoing
	<b>Recycling</b> Continue to house recycling bins for Community Centre use and consider other forms of recycling stations eg textiles	WBC/ HPC	No cost	21-25	Ongoing
	<b>Recycling</b> Recycle sports liquid bottles from changing rooms	WBC/ CL	No cost	21-25	Ongoing
	<b>Recycling</b> At Community litter picks separate litter and	FOLP	No cost	21-25	Ongoing

Improvement	Project	Responsibility	Resource	Time scale	Progress
	recycle at local supermarket				
<b>6. Community Involvement</b>	<b>Events</b> Advertise events in local papers, on social media, on park notice boards and on-line	HPC/ WBC/ FOLP	Advertising costs	21-25	Park notice boards now contain space for adverts to be displayed, park events advertised by HPC on web site in local press, parish newsletters etc
	<b>Friends Group</b> Continue to support Friends of Linear Park	WBC/ HPC	No cost	21-25	Friends group established – ongoing partnership
	<b>Other users of the park</b> Consult with football clubs over football facilities and other sports groups. Consider artificial cricket wicket	WBC	No cost	21-25	Pitch 3 enlarged to accommodate older youth team 09/10 season.
	<b>Events</b> Advertise FOLP work parties throughout the park using notice boards, social media. Many volunteers have joined after seeing volunteers “on the ground”	WBC FOLP	FOLP done voluntarily.	21-25	Ongoing
	<b>Other users of the park</b> Support closer links with users of the Beansheaf Centre	WBC/ HPC	No cost	21-25	
	<b>Community Café</b> Allow groups to raise money for charity by running a café out of the park.	HPC/ WBC	c.£2000 convert to		
<b>7. Develop a Marketing Strategy for</b>	<b>Park Leaflet</b>	CB	No cost	21-25	
	<b>Friends leaflet</b>	FOLP	No cost	21-25	

Improvement	Project	Responsibility	Resource	Time scale	Progress
the Park	<b>Friends Website</b> Currently has a page with Holybrook PC, but is looking to create own website	FOLP	No cost via Holybrook PC		Under investigation.
	<b>WBC Website</b>	WBC	No cost	21-25	Update regularly
	<b>Holybrook PC website/newsletter</b>	HPC/ WBC/ FOLP	No cost	21-25	Published bi-monthly. Advertise park and events.

### Key to Who is Responsible

<b>WBC</b>	West Berkshire Council	<b>CROW</b>	Conserve Reading on a Wednesday volunteers
<b>CB</b>	Caroline Booth, Grounds Maintenance Officer	<b>CL</b>	Continental Landscapes Ltd, Grounds Maintenance Contractors
<b>HPC</b>	Holybrook Parish Council	<b>Connick</b>	Tree Contractors
<b>FOLP</b>	Friends of Linear Park	<b>TLC</b>	TL Contracting, Highways Contractors
<b>EGC</b>	Eco Green Communities AKA Tikspac	<b>VH</b>	Volker Highways– Highways Contractors
<b>JS</b>	Judy Schneider, Volunteer Water Vole Officer	<b>ROSPA</b>	Playground Inspections
<b>TVP</b>	Thames Valley Police	<b>SS</b>	Sawscapes playgrounds repairs
<b>Cllr</b>	WBC Members		
<b>ROG</b>	Reading Outdoor Group volunteers		

## **17 How Will We Know When we've Arrived?**

### **Monitoring & Review**

Grounds Maintenance Officers will continue to visit the site regularly and monitor progress against the action plan. The park's management will continue to work in partnership with Holybrook Parish Council and the Friends of Linear Park to identify the strengths and weaknesses of the park and work towards improving the site for all. The park's management will continue to develop their relationship with contractors, Continental Landscapes Ltd, to ensure that the park is maintained to the highest possible standard.

### **Team Meetings and Appraisals**

All park staff working on the management plan for Linear Park meet regularly. The Grounds Maintenance Manager has regular one-to-ones and appraisals with Grounds Maintenance staff allowing monitoring of actions allocated to individuals. Appraisals help individuals to focus on the specific tasks set for them within Linear Park.

### **Friends Meetings**

The Friends of Linear Park meet regularly to discuss park business and are an active contributor to the management plan. They have provided much information to the plan and regular meetings allow Grounds Maintenance staff to keep an open dialogue between the park's management and park users. Regular meetings allow local residents to voice valuable feedback about the way the park is managed.

### **User Surveys**

A user survey was carried out in 2005 by Holybrook Parish Council. Local residents and park users expressed their views about the park and the services provided. The action and development plan for Linear Park has developed from the results of this survey.

A further survey was carried out in 2011 as part of a refreshed Holybrook Parish Plan. Unfortunately only a 10% return was received which was not considered sufficient to base a refreshed plan on. The new chairman of the Holybrook Parish Plan distributed a flyer during first half of 2014 informing residents that a better response was required to the surveys in order to move forward.

Once the results of the refreshed parish plan are published, this 5 year management plan will be updated accordingly to reflect the results of the survey. The park management will be able to gauge if the changes they implemented in the park over those 5-6 years were successful and focus on any new issues which have arisen.

Members of the public are able to contact West Berkshire Council or Holybrook Parish Council to pass comment on the park or to make a complaint. Contact details can be found on the West Berkshire Council website, on park notice boards and on the Holybrook Parish Council web site.

### **Review**

The Park's management team will meet regularly and will review this management plan yearly or when necessary. This will allow the team to focus on actions and developments for the park each year. The Green Flag application and feedback from the judges will be reviewed and any resulting recommendations or suggestions will be discussed and acted on where felt appropriate.

## 18 Appendices

### 18.1 Green Flag Criteria

#### **1. A Welcoming Place**

The overall impressions for any member of the community approaching and entering the park or green space should be positive and inviting, regardless of the purpose for which they are visiting. Features of particular importance are:

- Good and safe access
- Good signage to and in the park or green space
- Equal access for all members of the community

#### **2. Healthy, Safe and Secure**

The park or green space must be a healthy, safe and secure place for all members of the community to use. Relevant issues must be addressed in management plans and implemented on the ground. New issues that arise must be addressed promptly and appropriately. Particularly important issues are:

- Equipment and facilities must be safe to use
- The park or green space must be a secure place for all members of the community to use or traverse
- Dog fouling must be adequately addressed
- Health and safety policies should be in place, in practice and regularly reviewed
- Toilets, drinking water, first aid, public telephones and emergency equipment where relevant (e.g. life belts by water) should be available in or near the park or green space, and clearly sign posted

#### **3. Clean and Well Maintained**

For aesthetic as well as Health and Safety reasons, issues of cleanliness and maintenance must be adequately addresses, in particular:

- Litter and other waste management issues must be adequately addressed
- Grounds, buildings, equipment and other features must be well maintained
- A policy on litter, vandalism and maintenance should be in place and regularly reviewed

#### **4. Sustainability**

Methods used in maintaining the park or green space and its facilities should be environmentally sound, relying on best practices available according to current knowledge. Management should be aware of the range of techniques available to them, and demonstrate that informed choices have been made and are regularly reviewed. Specifically:

- An environmental policy or charter and management strategy should be in place, in practice and regularly reviewed
- Pesticide use should be minimised and justified
- Horticultural peat use should be eliminated
- Waste plant material in the park or green space should be recycled
- High horticultural and arboricultural standards should be demonstrated
- Energy conservation, pollution reduction, waste recycling and resource conservation measures should be used

#### **5. Conservation and Heritage**

Particular attention should be paid to the conservation and appropriate management of:

- Natural features, wildlife and fauna
- Landscape features
- Buildings and structural features

These features should serve their function well without placing undue pressure on the surrounding environment

#### **6. Community Involvement**

Management should actively pursue the involvement of members of the community who represent as many park or green space user groups as possible. Management should be able to demonstrate:

- Knowledge of user community and levels and patterns of use
- Evidence of community involvement in management and/or developments and results achieved

#### **7. Marketing**

- Marketing strategy in place, in practice and regularly reviewed
- Good provision of information to users, e.g. about management strategies, activities, features, ways to get involved
- Promotion of the park or green space as a community resource

#### **8. Management**

A Green Flag Award application must have a management plan or strategy in place which reflects the aspirations of Local Agenda 21 and clearly and adequately addresses all the above criteria and any other relevant aspects of the park or green space's management. The plan must be actively implemented and regularly reviewed. Financially sound management of the park or green space must also be demonstrated.

## **DUMPED GARDEN WASTE**

**Please think twice before dumping excess garden waste in the park.**

**Here are a few of the problems it causes:**

- **It can provide secluded nesting and breeding areas for rats**
- **It is a potential hazard to users of the park**
- **It upsets the natural balance of the park flora and fauna**
- **It can lead to garden escapes (cultivated plants invading the wild environment)**
- **It is unsightly**
- **It is a potential fire hazard**
- **It can smell very unpleasant**
- **It is very costly to remove**
- **It is an offence under The Refuse Disposal (Amenity) Act 1978.**

**Please use your green waste bin to dispose of your garden waste responsibly.**

**Thank you.**



## 18.3 Good Dog Owner Guide



### Good Dog Guide

Environmental Health



If you require this information in an alternative format or translation, please call 01635 42400 and ask for Environmental Health and licensing

**West Berkshire Council:**  
Environmental Health and Licensing  
Market Street  
Newbury  
Berkshire  
RG14 5LD  
telephone: 01635 503242  
email: ehadvce@westberks.gov.uk

**Wokingham Council:**  
Environmental Health and Licensing  
Shute End  
Wokingham  
Berkshire  
RG40 1BN  
telephone: 0116 974 6000  
email: environmental.health@wokingham.gov.uk

WBO19/08/14

West Berkshire & Wokingham Environmental Health & Licensing





This service is provided in partnership





[www.westberks.gov.uk](http://www.westberks.gov.uk)

### Good Dog guide

#### Please remember...

- All dogs must be under proper control at all times, preferably within a few yards of the owner or the person in charge. If in doubt, keep your dog on a lead.
- Do not let your dog stray. It could cause a road traffic accident where you could be held responsible. It could also attack people or other animals. Are you insured?
- Unnecessary noise can be a nuisance. A continually barking dog can ruin a quiet day or a night's sleep and may result in prosecution.
- Do not let your dog foul public areas. If it does, clear up the mess and deposit it in the bins provided or take it home to dispose. Worm adult dogs at least every six months.
- Show consideration for others in public places. Not everybody likes dogs, so do not let your dog approach other people or dogs unless invited.
- Do not let your dog disturb wildlife. Many of the plants and animals are protected or are rare species.
- All dogs in public must have an identification tag showing the name and address of owner – even if it is microchipped or tattooed.
- Do not leave your dog alone in a car or outside a shop.
- Ensure your dog is vaccinated against Parvovirus, Hepatitis, Distemper and Leptospirosis. Remember, a yearly booster is required.
- All dogs require training. It is never too late to start. Your vet could recommend a training club or contact the Animal Warden for advice.



#### Did you know?

- Collars – The owner or person in charge can be fined up to £5,000 if a dog is not wearing a collar showing the owner's name and address when out on a highway or in a public place. (Control of Dogs Order 1992)
- Fouling – You can be fined a fixed penalty fine of £50 for failing to immediately clear up dog faeces. Further penalties can be a fine of up to £1,000 and a criminal record. (Dogs (Fouling of Land) Act 1996)
- Strays – You are charged for kennelling and other expenses if your dog is seized as a stray. (Environmental Protection Act 1990)
- Noise – You can be fined up to £5,000 for allowing your dog to become excessively noisy. (Environmental Protection Act 1990)
- Keeping dogs under proper control – Allowing a dog to be dangerously out of control in a public place or in the home is a criminal offence and the owner or any person in charge of the dog at the time are liable. The courts have powers to order the destruction of the dog and sentence the owner to a fine or imprisonment.

If you witness an offence being committed and can identify the owner, please contact your local Animal Warden:

See contact details on reverse of this leaflet

If the dog appears to be dangerous or is acting aggressively, contact the police on 101.

## 18.4 DDA Report

Location	Barriers to compliance with DDA	DDA interpreted solution	Alternative solution	Comment
<b>Holybrook Linear Park</b>				
<b>Access Route to the park</b>	<p>The park is difficult to find from the A4.</p> <p>Similarly walking through the housing estate you need to know it is there</p>	<p>As the community centre is the only access point with a car park facility, good signage from the main roads is required</p>	<p>Include this information on your local publicity</p>	<p>Once found it is a wonderful open space.</p>
<b>Car Park Community Centre and Parish Office</b>	<p>The accessible bays do not comply with DDA</p> <p>The gap in the rails each side of the footpath from the car park requires a clear opening of 1 metre and level access.</p>	<p>Accessible parking bays require rear hatched area.</p> <p>6% of spaces available are required to be disabled parking bays.</p>		<p>This can be included in your improvement action plan.</p>
<b>Entrance points</b>	<p>Each access point from the housing estate is difficult to find and negotiate with a push chair or wheel chair. One the day of the visit only one was passable.</p>	<p>Improve access at each point on a rolling programme. We do recognise that allowing wheelchair access may allow unwanted vehicles on the park.</p>	<p>Clearly direct wheelchair and push chairs to the car park access</p>	<p>A wheelchair using parent or parent of a wheel chair using child who lives on this estate would have great difficulty accessing the park with out driving to the car park first.</p>
	<p>The kissing gate style is manageable with assistance while the staggered sheep pen type does not allow manoeuvre space. A manhole covers standing proud from the ground blocks the path at one point.</p>			<p>The park offers a Walking for Health programme. People with mobility problems need this facility. If access from any one of these points was available, more people could</p>

				participate with a range of walks.
<b>Accessible WCs</b>	Toilet in good clean condition.	Requires a hand rail on the inside of the door to enable ease of closure.	n/a	Improved signage from the ramp. You cannot tell a toilet is there until facing it square on.
<b>Access to the walks and play areas</b>	The information board does not identify wheelchair or pushchair accessible routes	Include routes on legend and map. We were unable to access much of the park due to the surfaces being too difficult for wheels.	The path which crosses behind the centre building from the car park leads to the best walk for enjoyment of much of the park.	Include on your improvement action plan
		Resurface paths to key areas.	<b>A compact surface on this short route will immediately open up so much more, including the woodland walks, for wheelchair users and push chairs</b>	
	Most of the play areas have a raised threshold entrance. Some have a second entrance to the rear which is level, but not accessible from the designated foot path	Alter to level thresholds	Identify on the map and legend the most accessible	Include on your improvement action plan
	Insufficient seating in evidence	A mix of seating both with and without arms is required		Include on your improvement action plan

## 18.5 Regime of Maintenance

### Linear Park Grounds Maintenance Site profile

#### Holybrook Linear Park, Beansheaf, Calcot

##### **Scheduled Works**

Collect litter on Monday, Thursday and Saturday	756.38	100 sq. metres
Empty litter bins 3x weekly	8	Item
Empty dog bins 3x weekly	14	Item
Cleansing of paths and hard surfaces once per week	21	100 sq. metres
Inspect Type A play areas 3x per week: inspect play areas and equipment, clean, maintain to keep free from obvious vandalism, dangers and defects, maintain safer surfacing	1	Item
Inspect Type B play areas 3x per week: inspect play areas and equipment, clean, maintain to keep free from obvious vandalism, dangers and defects, maintain safer surfacing	1	Item
Grass Code B: Performance Cut (25-60mm)	470.47	100 sq. metres
Grass Code D - Open Space Grass Cutting: 8occs.	494.79	100 sq. metres
Grass Code G – Summer Meadow twice annually	727.31	100 sq metres
Preparation for Playing Season	4	Items
Preparation for Football Fixtures	4	Items
Clean changing rooms and toilet at Holybrook Park	1	Item
Regime of Care of Pitches	4	Items
Herbicide Treatment of Hard Surfaces twice annually	19.75	100 square met

#### Holybrook Linear Park, Fords Farm, Calcot

##### **Scheduled Works**

Empty litter bins 3x weekly	1	Item
Empty dog bins 3x weekly	4	Item
Cleansing of paths and hard surfaces once per week	21	100 sq. metres
Inspect Type B play areas 3x per week: inspect play areas and equipment, clean, maintain to keep free from obvious vandalism, dangers and defects, maintain safer surfacing	3	Item
Grass Code B: Performance Cut (35-60mm)	470.47	100 sq. metres
Grass Code D - Open Space Grass Cutting: 8occs.	573.87	100 sq. metres
Grass Code G – Summer Meadow twice annually	77.7	100 sq. metres
Herbicide Treatment of Hard Surfaces twice annually	10.48	100 sq. metres

**Grand Total £55,862.39**

## **18.6 Environmental Policy**

West Berkshire Council is committed to protecting and enhancing the environment both locally and globally. The Council is determined to serve the best interests of the local community by protecting and actively promoting the improvement of Holybrook Linear Park. It is determined, in partnership with the local community, to pass on the parks to future generations in a better condition than they are today.

The Council recognises the importance in ensuring it incorporates environmental and sustainability issues into its services and activities. The Council will ensure that environmental priorities are integrated into the decisions it takes on the management of the parks and will seek to work within the following principles:

(A) **Protection of our Environment** - we will minimise, and wherever possible eliminate, the release of all forms of pollution (including the use of pesticides)

(B) **Protection of the Living World** - we will protect, and where appropriate enhance, habitats and biodiversity

(C) **Sustainable Use of Natural Resources** - we will make sustainable use of renewable natural resources where possible. We will conserve non-renewable resources, and where practicable use recycled materials

(D) **Sustainable Transport** - we will reduce the need for movement of both people and goods and encourage walking, cycling and the use of public transport as alternatives to the private car

(E) **Minimisation and Safe Disposal of Waste** - we will minimise the creation of waste and encourage the appropriate conservation, re-use and recycling of resources

(F) **Wise Use of Resources** - we will seek to minimise waste of all limited resources, including energy, water and materials, and use sustainable resources where possible

(G) **Delivery and Purchase of Services and Products** - we will minimise adverse environmental impacts of the services which we deliver by using the best available technology not entailing excessive cost. We will include environmental standards in all contracts and will ensure that contractors working on the behalf of the Council apply environmental standards at least equivalent to ours. We will consider environmental matters in our product purchases, and reduce the adverse environmental impact of our purchases

(H) **Environmental Information** – we will promote a sense of responsibility and understanding for the environment and participation in environmental issues, by raising awareness, by education, information provision and open consultation with the local community

(I) **Environmental Responsibility** - we will monitor and review this environmental policy with a view to improving performance each year with positive action. Staff and members will demonstrate a commitment to the policy. Management decisions relating to the parks will take account of the principles of this policy

The Council will achieve these commitments through implementation of the management plan for the park.

## 18.7 Playground Inspection Criteria example

Site/Equipment type	Inspection
Beansheaf (Sweet Briar Drive) - Bench (PG-BS-01)	Metal Work Undamaged? (3 Per Week)
Beansheaf (Sweet Briar Drive) - Bench (PG-BS-01)	Supports Present And Secure? (3 Per Week)
Beansheaf (Sweet Briar Drive) - Carousel Kompan (PG-BS-07)	Chains In Good Condition With Less Than 40% Wear? (3 Per Week)
Beansheaf (Sweet Briar Drive) - Carousel Kompan (PG-BS-07)	Supports Present And Secure? (3 Per Week)
Beansheaf (Sweet Briar Drive) - Carousel Kompan (PG-BS-07)	Surfaces Undamaged? (3 Per Week)
Beansheaf (Sweet Briar Drive) - Carousel Kompan (PG-BS-07)	Working Properly Without Undue Noise? (3 Per Week)
Beansheaf (Sweet Briar Drive) - Carousel Supernova Kompan (PG-BS-08)	Supports Present And Secure? (3 Per Week)
Beansheaf (Sweet Briar Drive) - Carousel Supernova Kompan (PG-BS-08)	Surfaces Undamaged? (3 Per Week)
Beansheaf (Sweet Briar Drive) - Carousel Supernova Kompan (PG-BS-08)	Working Properly Without Undue Noise? (3 Per Week)
Beansheaf (Sweet Briar Drive) - Cycle Rack (PG-BS-02)	Metal Work Undamaged? (3 Per Week)
Beansheaf (Sweet Briar Drive) - Cycle Rack (PG-BS-02)	Supports Present And Secure? (3 Per Week)
Beansheaf (Sweet Briar Drive) - Fence (PG-BS-03)	Metal Work Undamaged? (3 Per Week)
Beansheaf (Sweet Briar Drive) - Gate (PG-BS-04)	Metal Work Undamaged? (3 Per Week)
Beansheaf (Sweet Briar Drive) - Gate (PG-BS-04)	Working Properly Without Undue Noise? (3 Per Week)
Beansheaf (Sweet Briar Drive) - Litter Bin (PG-BS-05)	Metal Work Undamaged? (3 Per Week)
Beansheaf (Sweet Briar Drive) - Litter Bin (PG-BS-05)	Secure And Undamaged? (3 Per Week)
Beansheaf (Sweet Briar Drive) - Multiplay Overhead Bar Komplan (PG-BS-09)	All Parts In Place And Securely Fixed? (3 Per Week)
Beansheaf (Sweet Briar Drive) - Multiplay Overhead Bar Komplan (PG-BS-09)	Guard Rails Present? (3 Per Week)
Beansheaf (Sweet Briar Drive) - Multiplay Overhead Bar Komplan (PG-BS-09)	Metal Work Undamaged? (3 Per Week)
Beansheaf (Sweet Briar Drive) - Multiplay Overhead Bar Komplan (PG-BS-09)	No Signs Of Fresh Holes In Metal Or Timber Where Something May Have Been Removed? (3 Per Week)
Beansheaf (Sweet Briar Drive) - Multiplay Overhead Bar Komplan (PG-BS-09)	Supports Present And Secure? (3 Per Week)
Beansheaf (Sweet Briar Drive) - Multiplay Overhead Bar Komplan (PG-BS-09)	Surfaces Undamaged? (3 Per Week)
Beansheaf (Sweet Briar Drive) - Multiplay Overhead Bar Komplan (PG-BS-09)	Timbers In Good Condition? (3 Per Week)
Beansheaf (Sweet Briar Drive) - Multiplay Toddler Komplan (PG-BS-10)	All Parts In Place And Securely Fixed? (3 Per Week)
Beansheaf (Sweet Briar Drive) - Multiplay Toddler Komplan (PG-BS-10)	Guard Rails Present? (3 Per Week)
Beansheaf (Sweet Briar Drive) - Multiplay Toddler Komplan (PG-BS-10)	Metal Work Undamaged? (3 Per Week)
Beansheaf (Sweet Briar Drive) - Multiplay Toddler Komplan (PG-BS-10)	No Signs Of Fresh Holes In Metal Or Timber Where Something May Have Been Removed? (3 Per Week)
Beansheaf (Sweet Briar Drive) - Multiplay Toddler Komplan (PG-BS-10)	Ropes Secure And Undamaged? (3 Per Week)
Beansheaf (Sweet Briar Drive) - Multiplay Toddler Komplan (PG-BS-10)	Slide Chute(s) Undamaged And Clear Of Foreign Objects? (3 Per Week)
Beansheaf (Sweet Briar Drive) - Multiplay Toddler Komplan (PG-BS-10)	Supports Present And Secure? (3 Per Week)
Beansheaf (Sweet Briar Drive) - Multiplay Toddler Komplan (PG-BS-10)	Surfaces Undamaged? (3 Per Week)
Beansheaf (Sweet Briar Drive) - Rocker Red Komplan (PG-BS-11)	Grips Firm And Secure? (3 Per Week)
Beansheaf (Sweet Briar Drive) - Rocker Red Komplan (PG-BS-11)	Secure And Undamaged? (3 Per Week)
Beansheaf (Sweet Briar Drive) - Rocker Red Komplan (PG-BS-11)	Spring/Spring Cover Undamaged? (3 Per Week)
Beansheaf (Sweet Briar Drive) - Rocker Red Komplan (PG-BS-11)	Surfaces Undamaged? (3 Per Week)
Beansheaf (Sweet Briar Drive) - Rocker Red Komplan (PG-BS-11)	Working Properly Without Undue Noise? (3 Per Week)
Beansheaf (Sweet Briar Drive) - Rocker Small Sutcliffe (PG-BS-12)	Grips Firm And Secure? (3 Per Week)
Beansheaf (Sweet Briar Drive) - Rocker Small Sutcliffe (PG-BS-12)	Secure And Undamaged? (3 Per Week)
Beansheaf (Sweet Briar Drive) - Rocker Small Sutcliffe (PG-BS-12)	Spring/Spring Cover Undamaged? (3 Per Week)
Beansheaf (Sweet Briar Drive) - Rocker Small Sutcliffe (PG-BS-12)	Surfaces Undamaged? (3 Per Week)

### 18.8 Safety Audit for Linear Park

<b>Client Name: West Berkshire Council</b> <b>Site Name: Holybrook Linear Park (West) Beansheaf</b> <b>Safety Audit Inspection Date: 19/07/2016</b>			
No and Item	Comments and Recommendations	Risk	WBC Actions
1. Pedestrian entrance	Satisfactory	Low	
2. Signage	Satisfactory	Low	
3. Boundary heading westwards	Satisfactory	Low	
4. Entrance fence	Damaged	Medium	Repaired
5. Dog waste bins	Satisfactory	Low	
6. Bridge over ditch	Satisfactory	Low	
7. Culvert opening	Satisfactory	Low	
8. Wide mown paths at western end	Satisfactory	Low	
9. Footpath leading to field	Satisfactory – area beyond path is under private ownership	Low	
10. Fallen tree branch		Low	Removed
11. Fence	Damaged leaving potential access for motorcycles	Medium	Private fence but repaired by WBC
11. No tipping sign	Obscured by planting	Low	Sign was leaning and visual clutter so was removed.
12. Open meadow land	Satisfactory	Low	
13. Compost bins	Appears privately owned but may be on land belonging to WBC	Low	This has been left in situ as is not visible
13. Kissing gate	Moving section extends beyond its confines which may lead to unauthorised access by motorcycles	Medium	Repairs to be ordered.
14. Path to privately owned field	Satisfactory	Low	
15. Park benches	Satisfactory	Low	
16. Culvert	Barrier has loose rail	Medium	Repaired
17. Path along southern edge of		Low	

woodland			
18. Path along western edge of woodland		Low	
19. Balancing ponds		Low	
20. Path between balancing ponds and railway line		Low	
21. 6' chain link fence to railway	Not possible to access fence fully to assess its condition as it is overgrown. No defects found.	Low	
22. Wooden Post	Post is redundant.	Low	This post marks the point where the Fobney to Tilehurst water main tunnels beneath the railway
23. Path to field	Path is uneven giving tripping potential	Low	
24. Water's edge along north side of Holybrook		Low	
25. Bridge over Holybrook		Low	
25. Stepped edge by bridge	The lower step has unfilled sections which may cause users to fall into the water. Make good the steps	Low	Remedial works planned to include a ramp into the water.
25. Linear park Signs		Low	
26. Paths across open space		Low	
27. 6' fleur-de-lys palisade fence to railway	It was not possible to access every fence panel. No defects were found.	Low	
28. Level crossing gate		Low	
28. Level crossing signage	The warning sign is partially obscured by vegetation. Cut back	Low	This is private land under management of Network Rail
28. Level crossing path	The pathway has trip points at the ends and in between the tracks. The whole path should be levelled off to prevent users from tripping.	Medium	This is private land under management of Network Rail. A public Right of Way crosses at this point. Issues have been referred to other bodies.



28. Level crossing path	Step in path is not clear when coming from south to north. Consider adding contract to enable users to make out the step.	Medium	Referred to other body
29. Copse		Low	Jubilee Wood area
30. Kissing gate by mill stream	Trip hazard at gate where bridge end protrudes. Level ground off	Medium	Refer to Rights of Way Group
30. Footpath post		Low	
32. Link Path	Path bounded on east side by barbed wire. Monitor to ensure wire does not become damaged, leading to risk to users	Low	
32. Link Path	Path bounded on west side by electric shock fence. Monitor to ensure fence does not become damaged, exposing users to the risk of shock. Warning signage is in place.	Low	
33. Pathway joining eastern end of link path with eastern side of park at Mill		Low	
34. Pathway to Mill	Concrete path protrudes creating trip hazard near gate	Medium	Refer to Rights of Way Group
35. New trees along pathway at open space	Some tree stakes are broken and some are missing	Low	
33. Caged water outlet		Low	
36. Sluice	Not accessible from WBC land	Low	
37. Private gate		Low	
38. Land bridge across water		Low	
39. Manhole Cover	Cover surround cracked. It can be lifted by hand. Replace or repair unit.	Low	These belong to Thames Water.
40. Children's playgrounds	These are subject to separate assessments and have not been inspected at his time		
41. Fernhurst Rd access gate (Cow Lane)	Redundant post in middle of gap. This may allow users to squeeze path the post but sustain injury on the protruding	Medium	Consider removal of protrusions or painting with high visibility paint.

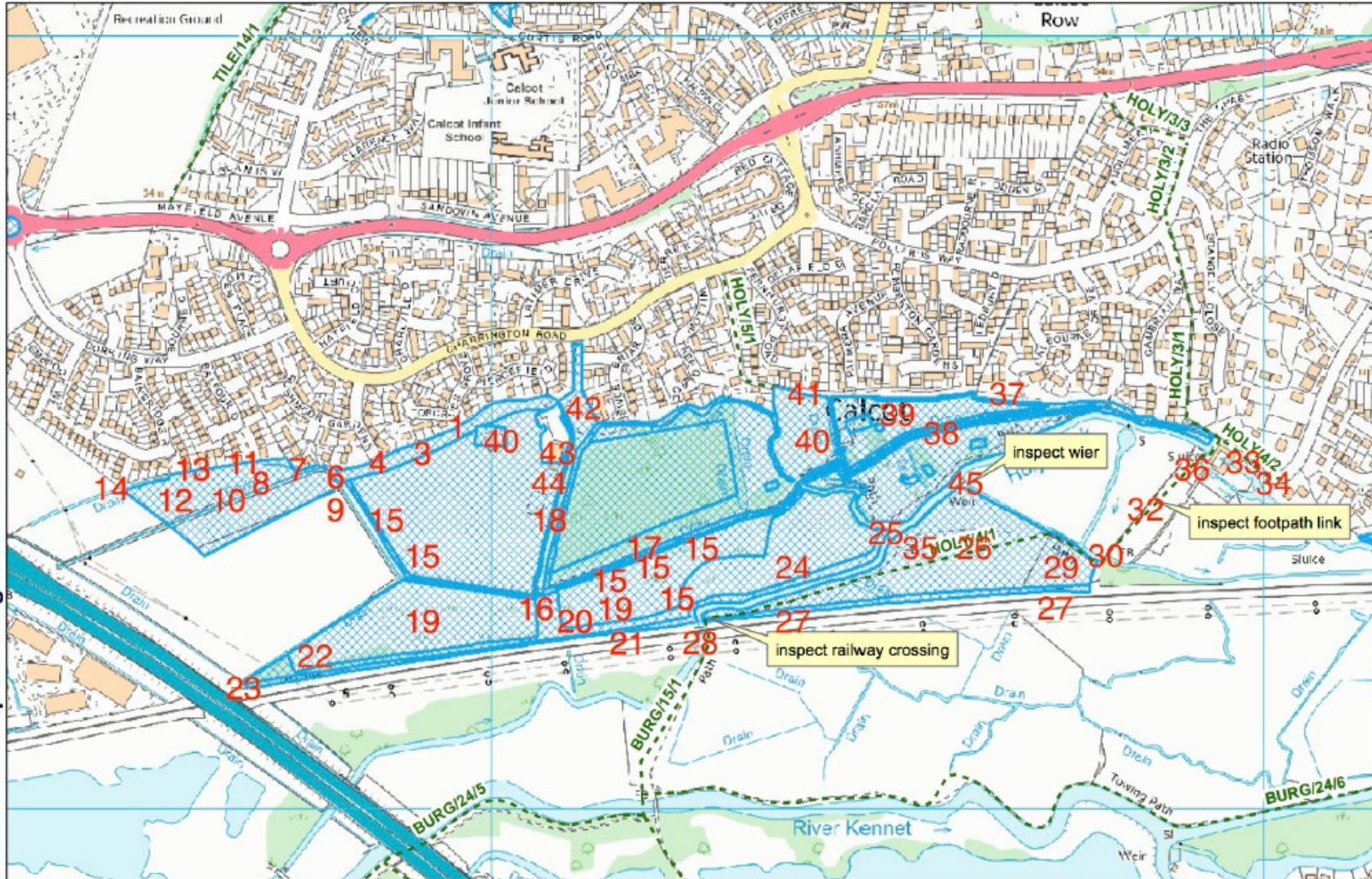
	fitting		
42. Community Garden		Low	
42. Overflow Car Park		Low	
42. Main access road off Charrington Rd		Low	
42. Gates at Charrington Rd		Low	
42. Signage at main highway entrance		Low	
42. Main Car Park		Low	
42. Electrical box	Electrical box has a misaligned and unlocked cover	Low	Cover is actually locked but does not visually look as if it is locked
43. Beansheaf Community Centre	The inside of the building was not considered as part of this assessment. Only the publicly accessible exterior areas have been considered.	Low	
43. The Garage	The inside of the building was not considered as part of this assessment. Only the publicly accessible exterior areas have been considered.	Low	
44. Multi-use games area, shelter and skate park	These are the subject of a separate assessment. Not inspected at this time.	Low	
44. Plank bridge over ditch		Low	
45. Weir	Not easily accessible to the casual passer –by.	Low	
45. Weir	Protruding metal sheeting at access point	Medium	Cover or remove
45. Weir	Semi buried metal bar (old fencing) crosses access path at foot level giving trip potential	Medium	Remove
45. Weir	Weir structure is cracked and distorted. The structural effects of this are not know to the inspector. This may cause tripping and falling into the water but it is reasonably obvious.	Low	
45. Weir	The remains of metal barriers are in the water near the weir	Low	

# Linear Park Beansheaf

11/04/2016  
1:6000



Western Park Map showing locations of items listed above.



Reproduced from Ordnance Survey map with the permission of the Controller of Her Majesty's Stationery Office (c) Crown Copyright 2016. West Berkshire District Council 0100024151.

**Client Name:** West Berkshire Council  
**Site Name:** Holybrook Linear Park (East) Fords Farm  
**Safety Audit Inspection Date:** 19/07/2016

No and Item	Comments and Recommendations	Risk	WBC Actions
1. Calcot Mill	This is private property with a Public Right of Way across. Users of the park who cross between western and eastern sections travel through this property.	Low	
1. Calcot Mill	Drop into flowing water at the bridge	Medium	
1. Mill Lane electrical sub station	Outside remit of WBC. Fence requires small amount of remedial work.	Low	
2. Entrance gate from Hawkesbury Drive	Gate post foundations exposed giving trip potential.	Low	
3. Children's playground	Covered by separate inspection reports and not considered by this inspection.		
4. Western boundary walk	Satisfactory	Low	
5. Stream edge with easy access	Satisfactory except for metal post protruding from the water at one point	Low	
6. Retaining wall to stream	Satisfactory	Low	
7. Fleur-de-lys fence to railway	Satisfactory	Low	
8. Dog waste bin	Satisfactory	Low	
9. Southern Path	Satisfactory	Low	
10. Water holding ponds (SUDS)	Satisfactory	Low	
11. Children's Playground	Subject to separate assessments and not inspected at this time	Low	
11. Children's playground	Panel from playground has been removed and is lying outside the fenced area.	Medium	Removed.
12. Low branches over pathway	These present a hazard to walkers	Low	Crown lifted.

13. Dog waste bin	Satisfactory	Low	
14. Children's playground	Subject to separate assessments and not inspected at this time		
15. Football goal	Goal mouth worn	Low	
16. Open grass area	Satisfactory	Low	
17. Bins	Satisfactory	Low	
18. Stream Access	Satisfactory except for concrete post stump near wall end giving a trip potential	Medium	Remove.
19. Eastern Gate access to Burghfield Rd	Satisfactory	Low	
20. Northern boundary	Satisfactory	Low	
21. Domestic fence with gates to private property	Satisfactory	Low	
22. Burbidge Close access gate	Gap between gate post and adjacent fence allowing animal access	Low	
23. Drainage Culvert	Backed up with vegetation and requires cleaning	Low	Refer to other body
24. Corsham Rd access gate	Gap to side of gate allows animal access	Low	
25. Open grass area	Privately owned portable goal	Low	
26. Timber gate	Satisfactory	Low	
27. Albury Gardens access gate	Satisfactory	Low	
28. Information board	Satisfactory	Low	
29. Manhole cover	Raised and may present a trip hazard	Low	
30. Tadcroft Walk access gate	Gap to side of gate may allow animal access	Low	
31. Manhole Cover	Raised and may present a trip hazard near the gate	Low	
32. Manhole Cover	Raised cover and may present a trip hazard	Low	

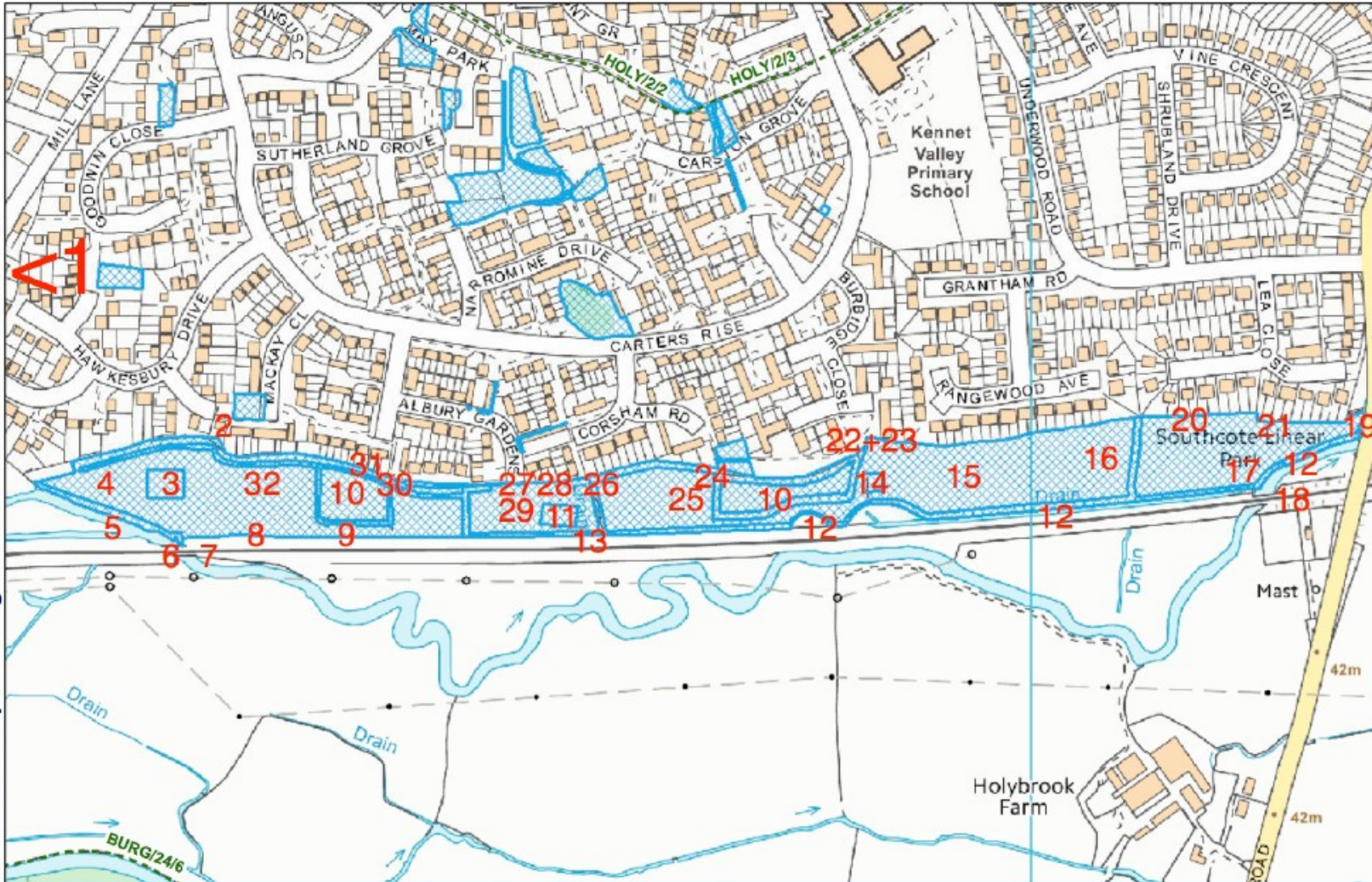
# Linear Park Fords Farm

11/04/2016

1:4080



Eastern Park Map showing locations of items listed above.



Reproduced from Ordnance Survey map with the permission of the Controller of Her Majesty's Stationers Office (c) Crown Copyright 2016. West Berkshire District Council 0100024151.

## 18.9 Wildlife Lists

Lists recorded between 2004-1012 by Catherine McEwan, Derek McEwan, Jan Hasler, Judy Schneider, Adrian Lawson, Gary Smith, Richard Lee and members of the Friends group.

\* denotes possible siting, not confirmed.

Common Name	Scientific Name
<b>Butterflies and Moths</b>	<b>Lepidoptera</b>
Small Tortoiseshell	<i>Aglais urticae</i>
Orange Tip	<i>Anthocharis cardamines</i>
Shoulder Stripe	<i>Anticlea badiata</i>
Ringlet	<i>Aphantopus hyperantus</i>
Scarlet Tiger Moth	<i>Callimorpha dominula</i>
Painted Lady	<i>Cynthia cardui</i>
Brimstone	<i>Gonepteryx rhamni</i>
Peacock	<i>Inachis io</i>
Meadow Brown	<i>Maniola jurtina</i>
Large Skipper	<i>Ochlodes venata</i>
Common Quaker	<i>Orthosia cerasi</i>
Hebrew Character	<i>Orthosia gothica</i>
Clouded Drab	<i>Orthosia incerta</i>
Speckled Wood	<i>Pararge aegeria</i>
Large White	<i>Pieris brassica</i>
Green-veined White	<i>Pieris napi</i>
Small White	<i>Pieris rapae</i>
Comma	<i>Polygonia c-album</i>
Common Blue	<i>Polyommatus icarus</i>
Small Skipper	<i>Thymelicus sylvestris</i>
Red Admiral	<i>Vanessa atalanta</i>
Gatekeeper*	<i>Pyronia tithonus</i>

Common Name	Scientific Name
<b>Dragonflies</b>	<b>Odonata</b>
Hairy Dragonfly/Hawker	<i>Brachytron pratense</i>
Banded Demoiselle	<i>Calopteryx splendens</i>
Beautiful Demoiselle	<i>Calopteryx virgo</i>
Common Blue Damselfly	<i>Enallagma cyathigerum</i>
Red-Eyed Damselfly *	<i>Erythromma najas</i>
Blue-tailed Damselfly	<i>Ischnura elegans</i>
Broad-Bodied Chaser	<i>Libellula depressa</i>
Black-tailed Skimmer	<i>Orthetrum cancellatum</i>
Large Red Damselfly	<i>Pyrrhosoma nymphula</i>
Common Darter	<i>Sympetrum striolatum</i>

Common Name	Scientific Name
<b>Mammals</b>	<b>Mammalia</b>
Wood Mouse	<i>Apodemus sylvaticus</i>
Water Vole	<i>Arvicola amphibius</i>
Roe Deer	<i>Capreolus capreolus</i>
Rabbit	<i>Oryctolagus coniculus</i>
Grey Squirrel	<i>Sciurus carolinensis</i>
Mole	<i>Talpa europea</i>
Red Fox	<i>Vulpes vulpes</i>

<b>Common Name</b>	<b>Scientific Name</b>
<b>Birds</b>	<b>Aves</b>
Sparrowhawk	<i>Accipiter nisus</i>
Sedge Warbler	<i>Acrocephalus schoenobenus</i>
Long-tailed Tit	<i>Aegithalos caudatus</i>
Kingfisher	<i>Alcedo atthis</i>
Greylag Goose	<i>Anser anser</i>
Mallard	<i>Anus platyrhynchos</i>
Swift	<i>Apus apus</i>
Grey Heron	<i>Ardea cinerea</i>
Waxwing	<i>Bombycilla garrulus</i>
Canada Goose	<i>Branta canadensis</i>
Buzzard	<i>Buteo buteo</i>
Greenfinch	<i>Carduelis ambigua</i>
Goldfinch	<i>Carduelis carduelis</i>
Lesser Redpoll	<i>Carduelis flammaea</i>
Siskin	<i>Carduelis spinus</i>
Treecreeper	<i>Certhia familiaris</i>
Feral Pigeon	<i>Columba livia 'feral'</i>
Wood Pigeon	<i>Columba palumbus</i>
Carrion Crow	<i>Corvus corone</i>
Jackdaw	<i>Corvus monedula</i>
Cuckoo	<i>Cuculus canorus</i>
Mute Swan	<i>Cygnus olor</i>
House Martin	<i>Delichon urbicum</i>
Greater-sptted Woodpecker	<i>Dendrocopos major</i>
Little Egret	<i>Egretta garzetta</i>
Reed Bunting	<i>Emberiza schoeniclus</i>
Robin	<i>Eritha cusrubecula</i>
Chaffinch	<i>Fringilla coelebs</i>
Coot	<i>Fulica atra</i>
Snipe	<i>Gallinago gallinago</i>
Moorhen	<i>Gallinula chloropus</i>
Jay	<i>Garrulus glandarius</i>

<b>Common Name</b>	<b>Scientific Name</b>
<b>Birds cont.</b>	<b>Aves</b>
Swallow	<i>Hirund rustica</i>
Lesser Black-backed Gull	<i>Larus fuscus graellsii</i>
Black-headed Gull	<i>Larus ridibundus</i>
Grasshopper Warbler	<i>Locustella ochotensis</i>
Jack Snipe*	<i>Lymnocyptes minimus</i>
Red Kite	<i>Milvus milvus</i>
Coal Tit	<i>Parus ater</i>
Blue Tit	<i>Parus caeruleus</i>
Great Tit	<i>Parus major</i>
House Sparrow	<i>Passer domesticus</i>
Chiffchaff	<i>Phylloscopus collybita</i>
Willow Warbler	<i>Phylloscopus trochilus</i>
Magpie	<i>Pica pica</i>
Green Woodpecker	<i>Picus viridis</i>
Dunnock	<i>Prunella modularis</i>
Rose-ringed Parakeet	<i>Psittacula krameri</i>
Bullfinch	<i>Pyrrhula pyrrhula</i>
Water Rail	<i>Rallus aquaticus</i>
Goldcrest	<i>Regulus regulus</i>
Nuthatch	<i>Sitta europaea</i>
Collared-dove	<i>Streptopelia decaocto</i>
Tawny Owl	<i>Strix aluco</i>
Starling	<i>Sturnus vulgaris</i>
Blackcap	<i>Sylvia atricapilla</i>
Wren	<i>Troglodytes troglodytes</i>
Blackbird	<i>Turdus merula</i>
Redwing	<i>Turdus iliacus</i>
Song Thrush	<i>Turdus philomelos</i>
Fieldfare	<i>Turdus pilaris</i>
Mistle Thrush	<i>Turdus viscivorus</i>
Barn Owl	<i>Tyto alba</i>



<b>Trees and shrubs (woody)</b>	
<b>Common Name</b>	<b>Scientific Name</b>
Alder	<i>Alnus glutinosa</i>
Ash	<i>Fraxinus excelsior</i>
Beech	<i>Fagus sylvatica</i>
Black Italian poplar	<i>Populus serotina</i>
Blackthorn	<i>Prunus spinosa</i>
Bramble	<i>Rubus fruticosus</i>
Cherry	<i>Prunus avium</i>
Crack willow	<i>Salix fragilis</i>
Dog rose	<i>Rosa canina</i>
Dogwood	<i>Cornus sanguinea</i>
Elder	<i>Sambucus nigra</i>
Field maple	<i>Acer campestre</i>
Goat Willow	<i>Salix caprea</i>
Grey alder	<i>Alnus incana</i>
Grey willow	<i>Salix cinerea</i>
Guelder rose	<i>Viburnum opulus</i>
Hazel	<i>Corylus avellana</i>
Holly	<i>Ilex aquifolium</i>
Hornbeam	<i>Carpinus betulus</i>
Larch	<i>Larix decidua</i>
Lime	<i>Tilia cordata</i>
Oak	<i>Quercus robur</i>
Osier	<i>Salix viminalis</i>
Rowan	<i>Sorbus aucuparia</i>
Silver birch	<i>Betula pendula</i>
Water dock	<i>Rumex hydrolapathum</i>
Wayfaring tree	<i>Viburnum lantana</i>
Weeping willow	<i>Salix babylonica</i>
White beam	<i>Sorbus aria</i>
White willow	<i>Salix alba</i>

<b>Grasses</b>	
<b>Common Name</b>	<b>Scientific Name</b>
Barren brome	<i>Bromus sterilis</i>
Bearded couch	<i>Elymus caninus</i>
Cock's-foot	<i>Dactylis glomerata</i>
Creeping bent	<i>Agrostis stolonifera</i>
False fox sedge	<i>Carex otrubae</i>
False oat-grass	<i>Arrhenantherum elatius</i>
Great reed-mace	<i>Typha latifolia</i>
Greater pond sedge	<i>Carex riparia</i>
Hairy brome	<i>Bromus ramosus</i>
Hard rush	<i>Juncus inflexus</i>
Meadow foxtail	<i>Alopecurus pratensis</i>
Pendulous sedge	<i>Carex pendula</i>
Reed	<i>Phragmites australis</i>
Rough meadow- grass	<i>Poa trivialis</i>
Ryegrass	<i>Lolium perenne</i>
Wall barley	<i>Hordeum murinum</i>
Yorkshire-fog	<i>Holcus lanatus</i>

<b>Herbaceous (non-woody) plants</b>	
<b>Common Name</b>	<b>Scientific Name</b>
Bittersweet	<i>Solanum dulcamara</i>
Bristly ox -tongue	<i>Picris echioides</i>
Cat's ear	<i>Hypochaeris radicata</i>
Cleavers	<i>Galium aperine</i>
Comfrey	<i>Symphytum officinale</i>
Common mallow	<i>Malva neglecta</i>
Common stinging nettle	<i>Urtica dioica</i>
Cow parsley	<i>Anthriscus sylvestris</i>
Creeping buttercup	<i>Ranunculus repens</i>
Creeping cinquefoil	<i>Potentilla repens</i>
Creeping Thistle	<i>Cirsium arvense</i>
Cut-leaved cranesbill	<i>Geranium dissectum</i>
Daisy	<i>Bellis perennis</i>
Dandelion	<i>Taraxacum vulgaria</i>
Field bindweed	<i>Convolvulus arvensis</i>
Figwort	<i>Scrophulia nodosa</i>
Fleabane	<i>Erigeron annuus</i>
Garlic mustard	<i>Alliaria petiolata</i>
Great willowherb	<i>Epilobium hirsutum</i>
Greater plantain	<i>Plantago major</i>
Ground ivy	<i>Glechoma hederacea</i>
Groundsel	<i>Senecio vulgaris</i>
Hawthorn	<i>Crataegus monogyna</i>
Hedge bindweed	<i>Calystegia sepium</i>
Hedge woundwort	<i>Stachys sylvatica</i>
Hemp agrimony	<i>Eupatorium cannabinum</i>
Herb Bennet	<i>Geum urbanum</i>
Hogweed	<i>Heracleum sphondylium</i>
Horsetail	<i>Equisetum arvense</i>
Ivy	<i>Hedera helix</i>
Knotgrass	<i>Polygonum aviculare</i>
Lesser burdock	<i>Arctium minus</i>
Marsh bedstraw	<i>Galium palustre</i>
Mayweed	<i>Matricaria inodora</i>
Meadow vetchling	<i>Lathyrus pratensis</i>
Meadowsweet	<i>Filipendula ulmaria</i>
Nipplewort	<i>Lapsana communis</i>
Pineapple mayweed	<i>Chamonilla suaveolens</i>
Prickly sow-thistle	<i>Sonchus asper</i>
Purple loosestrife	<i>Lythrum salicaria</i>
Shepherd's purse	<i>Capsule bursa pastoris</i>
Silverweed	<i>Argentina anserina</i>
Sorrel	<i>Rumex acetosa</i>
Spear thistle	<i>Cirsium vulgare</i>
Square stemmed willowherb	<i>Epilobium tetragonum</i>
Teasel	<i>Dipsacus fullonum</i>
Tufted vetch	<i>Vicia emcees</i>
Water forget-me-not	<i>Myosotis scorpioides</i>
White campion	<i>Silene alba</i>
Yarrow	<i>Achillea millefolium</i>

## 18.10 Email from FOLP Working Group

# Volunteering in the Community Garden and in Linear Park

---

Jan 2021 - This is now our fourth monthly email to all the volunteers for Friends of Linear Park and as we have now grown to 29 individuals, I felt it necessary to create a blind copy list, rather than show all our email addresses on each email (both security and space allocation reasons)

The most important news is that we have had to abandon our formal gatherings on Tuesday mornings at Beansheaf due to Covid restrictions. You can still volunteer to do some of the work as part of your daily exercise but only as individuals or those who are in "bubbles"

Activities done during December and January to date

1. Trim overhang branches and brambles encroaching onto main footpaths
2. Plant 150 whips
3. Footpath widening - this has become a real success, Cow Lane to cross roads, Beansheaf centre to Kiddies playground, main path from Garden approx 300m in total
4. Applied woodchip around benches on Wiggly Path
5. Rake leaves and collect sticks in and around The Garden
6. Weeding of flower beds and borders around the Garden, including the border nearest wood which was totally overgrown
7. Tidying of Cow Lane, trim edges, cutback overhang and litter collection
8. Hosing down and brush the mud off Pooh Bridge - now a weekly activity until Spring
9. Strimming around the Whips provided by Network Rail
10. Hoe all pavements edges within Car Park

Possible Activities as Individuals for the coming month

1. Further trimming of any tree overhang or brambles encroaching the pathways
2. Using clippers or hand fork to trim around any of the whips (3 major locations), replacing any bamboo supports or spirals (spares available in cupboard)
3. Brush down Pooh Bridge
4. Finish weeding the overgrown border within The Garden
5. Litter picking
6. Pot hole repair on main pathways

As soon as Covid restrictions are lifted, we will issue an updated list when small groups are allowed to meet

Regards

--

The Secretary  
Friends of Linear Park

**All welcome – just turn up on the day!**

# 18.11 Extracts from Friends of Linear Park Leaflet



The 'You are Here' sign on the map refers to Pooh Bridge

**LINEAR PARK**

Charrington Road, Calcot, Berkshire  
 Tel: 0118 9421372  
 email: [alison.harwood@btinternet.com](mailto:alison.harwood@btinternet.com)

Holybrook Parish Office, Beansheaf Community Centre  
 Charrington Road, Calcot RG31 7AW  
 (10am-1pm Monday to Friday)  
 Tell/Fax: 0118 945 4339 email: [holybrookcouncil@btconnect.com](mailto:holybrookcouncil@btconnect.com)  
[www.holybrookparishcouncil.co.uk](http://www.holybrookparishcouncil.co.uk)

The Holybrook Linear Park is a wonderful rural oasis which spreads the length of Beansheaf, Calcot and Fords Farm. It's easily accessible from many of the roads running south of Charrington Road/Pollards Way/Carters Rise, or through the grounds of the Beansheaf Community Centre in Charrington Road.



Friends of the Linear Park is a group of volunteers which meet to carry out projects that enhance the park, whilst protecting the vast array of wildlife on our doorstep. If you have an interest in flora and fauna or just enjoy a lovely walk in green surroundings then please visit the park. We would welcome your knowledge or voluntary support for our numerous events to improve the park. We can be contacted via the Parish Office, details are on the cover of this leaflet.



**History of Holybrook**

The Holy Brook and Kennet flow through Linear Park within the parish now known as Holybrook, which was formed in the year 2000 from that part of the parish of Theale which was to the east of the M4 motorway. Holybrook Parish is the fourth largest town/parish council in terms of population (just over 7,000) within the unitary authority of West Berkshire.



**Future Plans**

**Sensory Garden -**

Next to the Beansheaf Community Centre a feasibility study for this is being carried out by June Scott and Caroline Booth. Carolyn Jenkins from Reading Parks Department gave a talk that was extremely useful and informative.

Notice boards for the park are being installed.

We are indebted to Mr Chris Giles and his wife, Jackie, of Goodwin Close, David Baldock and Christle Gowling for the photographs, taken in or close to the Linear Park, and for their kind permission to use them both on the council website and here for the benefit of the community. All these plants, trees and creatures can be seen throughout the year—right on your doorstep!

18.12 Flyer advertising Local Access Forum Event in Linear Park 2012

# Making our Parks for People

Wednesday 30th May





A **FREE** event organised by the Mid & West Berks Local Access Forum and the Friends of Linear Park

**5.00pm to 9.30pm**  
**Beansheaf Community Centre,**  
 Charrington Road, Calcot,  
 Reading RG31 7AW

**Who should attend:**

- Parish & town councillors
- Members of Friends of Parks groups
- Members of Parish Planning groups
- Residents Association members in larger towns
- Youth leaders

**Programme:**

- Two short presentations
  - the history and origin of the park
  - provision of more public open spaces via planning policies
- Guided walking tour in groups led by the Friends
- Cold buffet and discussion of what's on
- Poetry session led by the Local Access Forum.

*This event is an opportunity to learn how to do that better by meeting others who are active volunteers in Friends of Parks groups*

**For more information please contact:**  
 Elaine Cox on: 01635 519069  
 or email: [elcox@westberks.gov.uk](mailto:elcox@westberks.gov.uk)

Every home in every town and village should be within easy walking distance of a public park. Outdoor recreation is essential for our physical and mental health, whatever our age or ability.

It is the duty of local councils to provide and maintain parks that people of all ages and abilities find attractive and pleasant to use: whether for just walking the dog, kicking a ball around with the kids, adventure play, formal sports and games or community events. Local Access Forums were set up in 2000 to advise councils on how to manage access to the countryside and open spaces for recreation.

It is good to involve local communities in the planning, management, care and enhancement of their local park.

The Linear Park at Holybrook is a 'Green Flag' park with a very active Friends Group. The Mid & West Berkshire Local Access Forum (covering West Berkshire District and Reading and Wokingham Boroughs) is organising this event so that others can share their experience and make their parks better for their communities.

*It is the duty of local councils to provide and maintain parks that people find attractive and pleasant to use*



Making our parks for People



# HOLYBROOK PARISH NEWS

*Serving the communities of Fords Farm and Beansheaf Farm*

**December 2020**

Dear Holybrook Residents,

At this time of year we often take a moment to reflect on the last 12 months. This year, in particular, may have been difficult for many due to the uncertain times in which we are living. As a Parish Council we are very proud of the way that our residents have come together to acknowledge the hard work of all keyworkers, across many industries, who have kept essential services running during the Covid-19 pandemic. We also thank you for adhering to the rules on social distancing and for looking after one another; whether this is helping with shopping, cutting the grass or having a socially distanced chat. These gestures go a long way not only in difficult times but always!

Thank you to our office staff who have been keeping the Parish Office running from their individual homes. Their hard work has allowed the Council to operate as normally as possible under the difficult circumstances we face at the present time.

## Friends of Linear Park – We have done it again; the has Park won the coveted Green Flag!

Even Covid-19 has not deterred the Friends of Linear Park from helping to keep the Park tidy and well maintained. This hard work, over the past 12 months, especially through the summer, has been rewarded with the Park retaining its Green Flag for the 11th year running making it one of the 2000 best kept parks in the country. This year the award was judged by a 'mystery' person so we had no way of knowing when the Park was going to be inspected. Well done to everyone for this great achievement.

The Working Group is now changing from the last day of the month, to every Tuesday with individuals having the option of which Tuesday to join. This will allow for lone working but, overall, more work will be done on a person to person allocation. Anyone wishing to join in with the activities please email [folpcalcot@gmail.com](mailto:folpcalcot@gmail.com)

Winter is here and the nature in the Park changes with the seasons. Some wildlife goes into hibernation, whilst others gain their winter feathers and the leaves enjoy their late autumn colours before falling from the trees.

Don your hat, coat, gloves (and wellies) to enjoy a walk in our wonderful park. Whatever the weather, there is always something to see and enjoy. Let us know what you find.

**Seasons greetings to you all.**





## Things to look for in... Early Spring



---

**Invertebrates:**

- Snails and myriapods such as woodlice, centipedes and millipedes.
- Butterflies such as Small Tortoiseshells, Peacocks and Red Admirals
- Queen Buff-Tailed Bumblebees.
- Beetles such as 7-Spotted Ladybirds.



**Early flowers:**

- Snowdrops and Lesser Celandines and brightly-coloured catkins



**Woodland birds:**

- Robins, Wrens, Goldcrests, warblers like Chiffchaff and Blackcap
- Woodpeckers, Treecreeper and Nuthatch
- Tits and finches
- Sparrowhawk

**Friends of the Linear Park**  
Promoting, enhancing and protecting the park and its wildlife

**18.15 Prudential Volunteers 18 May 2012**





